

Recombinant Human PRAME Protein, His/GST-tagged

Cat. No. PRAME-724H Lot. No. (See product label)

SPECIFICATION

Product Overview	Recombinant Human PRAME(Asn416~Leu502) fused with His/GST tag at N-terminal was expressed in E. coli.
Species	Human
Source	E.coli
ProteinLength	Asn416~Leu502
Description	This gene encodes an antigen that is preferentially expressed in human melanomas and that is recognized by cytolytic T lymphocytes. It is not expressed in normal tissues, except testis. The encoded protein acts as a repressor of retinoic acid receptor, and likely confers a growth advantage to cancer cells via this function. Alternative splicing results in multiple transcript variants.
Form	PBS, pH7.4, containing 0.01% SKL, 1mM DTT, 5% Trehalose and Proclin300.
Molecular Mass	36.9kDa
Endotoxin	<1.0EU per 1g (determined by the LAL method)
Purity	> 92%
Applications	Positive Control; Immunogen; SDS-PAGE; WB. If bio-activity of the protein is needed, please check active protein.

 Tel: 1-631-559-9269 1-516-512-3133

 Email: info@creative-biomart.com  Fax: 1-631-938-8127

 45-1 Ramsey Road, Shirley, NY 11967, USA

Stability The thermal stability is described by the loss rate. The loss rate was determined by accelerated thermal degradation test, that is, incubate the protein at 37 centigrade for 48h, and no obvious degradation and precipitation were observed. The loss rate is less than 5% within the expiration date under appropriate storage condition.

Storage Avoid repeated freeze/thaw cycles. Store at 2-8 centigrade for one month. Aliquot and store at -80 centigrade for 12 months.

Reconstitution Reconstitute in PBS or others.

GENE INFORMATION

Gene Name [PRAME](#) preferentially expressed antigen in melanoma [[Homo sapiens](#)]

Official Symbol [PRAME](#)

Synonyms PRAME; preferentially expressed antigen in melanoma; MAPE; melanoma antigen preferentially expressed in tumors; cancer/testis antigen 130; CT130; OIP-4; opa-interacting protein 4; Opa-interacting protein OIP4; preferentially expressed antigen of melanoma; OIP4;

Gene ID [23532](#)

mRNA Refseq [NM_006115](#)

Protein Refseq [NP_006106](#)

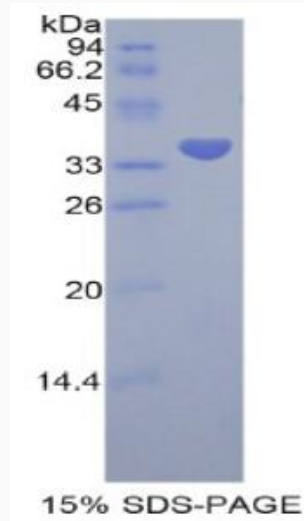
MIM [606021](#)

UniProt ID [P78395](#)

 Tel: 1-631-559-9269 1-516-512-3133

 Email: info@creative-biomart.com  Fax: 1-631-938-8127

 45-1 Ramsey Road, Shirley, NY 11967, USA



 Tel: 1-631-559-9269 1-516-512-3133

 Email: info@creative-biomart.com  Fax: 1-631-938-8127

 45-1 Ramsey Road, Shirley, NY 11967, USA