

Recombinant Human PRAP1 Protein, Myc/DDK-tagged, C13 and N15-labeled

Cat. No. PRAP1-4229H Lot. No. (See product label)

SPECIFICATION

Product Overview	PRAP1 MS Standard C13 and N15-labeled recombinant protein (NP_660203) with a C-terminal MYC/DDK tag, was expressed in HEK293 cells.
Species	Human
Source	HEK293
Description	PRAP1 (Proline Rich Acidic Protein 1) is a Protein Coding gene. Diseases associated with PRAP1 include Hepatocellular Carcinoma. Among its related pathways are Autophagy - animal. An important paralog of this gene is ZNF511-PRAP1.
Molecular Mass	17.2 kDa
AA Sequence	MRLLLLVTSLVVLLWEAGAVPAPKVPIKMQVKHWPSEQDPEKAWGARVVEPPEK DDQLVVLFPVQKPKLLTTEEKPRGQGRGPILPGTKAWMETEDTLGRVLSPEPDHDS LYHPPPEEDQGEERPLWVMPNHQVLLGPEEDQDHIYHPQTRTRPLEQKLISEEDL AANDILDYKDDDDKV
Purity	> 80% as determined by SDS-PAGE and Coomassie blue staining
Stability	Stable for 3 months from receipt of products under proper storage and handling conditions.
Storage	Store at -80 centigrade. Avoid repeated freeze-thaw cycles.

 Tel: 1-631-559-9269 1-516-512-3133

 Email: info@creative-biomart.com  Fax: 1-631-938-8127

 45-1 Ramsey Road, Shirley, NY 11967, USA

Concentration 50 µg/mL as determined by BCA

Storage Buffer 100 mM glycine, 25 mM Tris-HCl, pH 7.3.

GENE INFORMATION

Gene Name PRAP1 proline-rich acidic protein 1 [Homo sapiens (human)]

Official Symbol PRAP1

Synonyms PRAP1; proline-rich acidic protein 1; UPA; PRO1195; RP11-122K13.6; MGC126792;

Gene ID 118471

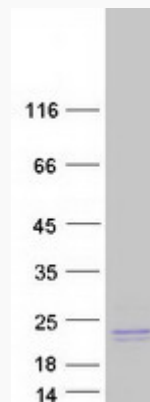
mRNA Refseq NM_145202

Protein Refseq NP_660203

MIM 609776

UniProt ID Q96NZ9

SDS-PAGE



 Tel: 1-631-559-9269 1-516-512-3133

 Email: info@creative-biomart.com  Fax: 1-631-938-8127

 45-1 Ramsey Road, Shirley, NY 11967, USA