

Recombinant Human PRAP1 Protein (Gln21-Gln151), C-His tagged

Cat. No. PRAP1-5609H Lot. No. (See product label)

SPECIFICATION

Product Overview	Recombinant human PRAP1 (Gln21-Gln151) fused with the C-terminal His tag was expressed in mammalian cells.
Species	Human
Source	Mammalian Cells
ProteinLength	Gln21-Gln151
Form	Lyophilized powder/frozen liquid
Molecular Mass	3.41 kDa
Purity	> 90 % as determined by SDS-PAGE
Notes	For research use only.
Storage	Use a manual defrost freezer and avoid repeated freeze thaw cycles. Store at 2 to 8 centigrade for one week. Store at -20 to -80 centigrade for twelve months from the date of receipt.
Storage Buffer	Supplied as solution form in PBS or lyophilized from PBS.
Reconstitution	Reconstitute in sterile water for a stock solution.

 Tel: 1-631-559-9269 1-516-512-3133

 Email: info@creative-biomart.com  Fax: 1-631-938-8127

 45-1 Ramsey Road, Shirley, NY 11967, USA

Shipping

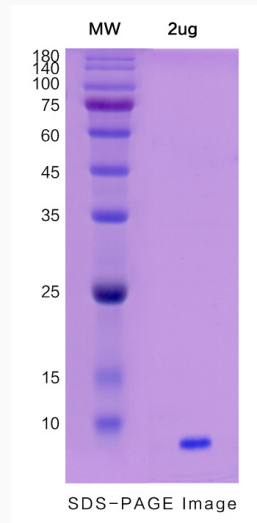
They are shipped out with dry ice/blue ice unless customers require otherwise.

GENE INFORMATION

Gene Name	PRAP1 proline-rich acidic protein 1 [Homo sapiens (human)]
Official Symbol	PRAP1
Synonyms	PRAP1; proline-rich acidic protein 1; UPA; PRO1195; RP11-122K13.6; MGC126792;
Gene ID	118471
mRNA Refseq	NM_001145201
Protein Refseq	NP_001138673
MIM	609776
UniProt ID	Q96NZ9

 Tel: 1-631-559-9269 1-516-512-3133 Email: info@creative-biomart.com  Fax: 1-631-938-8127 45-1 Ramsey Road, Shirley, NY 11967, USA

SDS-PAGE



 Tel: 1-631-559-9269 1-516-512-3133

 Email: info@creative-biomart.com  Fax: 1-631-938-8127

 45-1 Ramsey Road, Shirley, NY 11967, USA