

Recombinant Human PRCP Protein (Leu22-His496), C-His tagged

Cat. No. PRCP-5974H Lot. No. (See product label)

SPECIFICATION

Product Overview	Recombinant human PRCP (Leu22-His496) fused with the C-terminal His tag was expressed in mammalian cells.
Species	Human
Source	Mammalian Cells
ProteinLength	Leu22-His496
Form	Lyophilized powder/frozen liquid
Molecular Mass	52.25 kDa
Purity	> 90 % as determined by SDS-PAGE
Notes	For research use only.
Storage	Use a manual defrost freezer and avoid repeated freeze thaw cycles. Store at 2 to 8 centigrade for one week. Store at -20 to -80 centigrade for twelve months from the date of receipt.
Storage Buffer	Supplied as solution form in PBS or lyophilized from PBS.
Reconstitution	Reconstitute in sterile water for a stock solution.

 Tel: 1-631-559-9269 1-516-512-3133

 Email: info@creative-biomart.com  Fax: 1-631-938-8127

 45-1 Ramsey Road, Shirley, NY 11967, USA

Shipping They are shipped out with dry ice/blue ice unless customers require otherwise.

GENE INFORMATION

Gene Name PRCP prolylcarboxypeptidase (angiotensinase C) [Homo sapiens (human)]

Official Symbol PRCP

Synonyms PRCP; prolylcarboxypeptidase (angiotensinase C); lysosomal Pro-X carboxypeptidase; HUMPCP; PCP; angiotensinase C; proline carboxypeptidase; lysosomal carboxypeptidase C; prolylcarboxypeptidase isoform 1 preproprotein; MGC2202;

Gene ID 5547

mRNA Refseq NM_005040

Protein Refseq NP_005031

MIM 176785

UniProt ID P42785

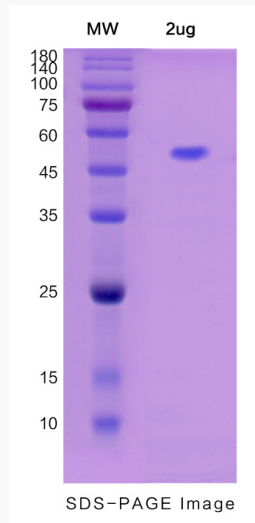
 Tel: 1-631-559-9269 1-516-512-3133

 Email: info@creative-biomart.com  Fax: 1-631-938-8127

 45-1 Ramsey Road, Shirley, NY 11967, USA



SDS-PAGE



Tel: 1-631-559-9269 1-516-512-3133

Email: info@creative-biomart.com Fax: 1-631-938-8127

45-1 Ramsey Road, Shirley, NY 11967, USA