

Recombinant Human PRDM16 protein, His-tagged

Cat. No. PRDM16-3247H Lot. No. (See product label)

SPECIFICATION

Product Overview	Recombinant Human PRDM16 protein(Ala82~Lys211), fused with N-terminal His Tag, was expressed in E.coli.
Species	Human
Source	E.coli
ProteinLength	Ala82~Lys211
Form	PBS, pH7.4, containing 0.01% SKL, 1mM DTT, 5% Trehalose and Proclin300.
Molecular Mass	20kDa
Endotoxin	<1.0EU per 1g (determined by the LAL method)
Purity	> 90%
Storage	Avoid repeated freeze/thaw cycles. Store at 2-8°C for one month. Aliquot and store at -80°C for 12 months.
Reconstitution	Reconstitute in 10mM PBS (pH7.4) to a concentration of 0.1-1.0 mg/mL. Do not vortex.

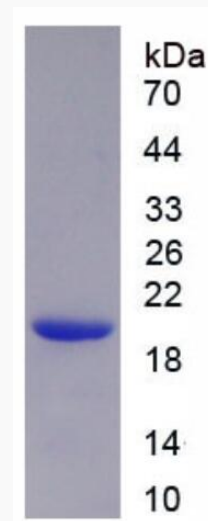
GENE INFORMATION

 Tel: 1-631-559-9269 1-516-512-3133

 Email: info@creative-biomart.com  Fax: 1-631-938-8127

 45-1 Ramsey Road, Shirley, NY 11967, USA

Gene Name	PRDM16 PR domain containing 16 [Homo sapiens]
Official Symbol	PRDM16
Synonyms	PRDM16; PR domain containing 16; PR domain zinc finger protein 16; KIAA1675; MDS1/EVI1 like; MEL1; MGC166915; PFM13; transcription factor MEL1; MDS1/EVI1-like gene 1;
Gene ID	63976
mRNA Refseq	NM_022114
Protein Refseq	NP_071397
MIM	605557
UniProt ID	Q9HAZ2

SDS-PAGE


 Tel: 1-631-559-9269 1-516-512-3133

 Email: info@creative-biomart.com  Fax: 1-631-938-8127

 45-1 Ramsey Road, Shirley, NY 11967, USA