

## Recombinant Human PRDM16 protein, His-SUMO-tagged

Cat. No. PRDM16-3254H Lot. No. (See product label)

### SPECIFICATION

<b>Product Overview</b>	Recombinant Human PRDM16 protein(Ala82~Lys211), fused with Two N-terminal Tags, His-tag and SUMO-tag, was expressed in E.coli.
<b>Species</b>	Human
<b>Source</b>	E.coli
<b>ProteinLength</b>	Ala82~Lys211
<b>Form</b>	PBS, pH7.4, containing 0.01% SKL, 1mM DTT, 5% Trehalose and Proclin300.
<b>Molecular Mass</b>	34kDa
<b>Endotoxin</b>	<1.0EU per 1g (determined by the LAL method)
<b>Purity</b>	> 90%
<b>Storage</b>	Avoid repeated freeze/thaw cycles. Store at 2-8°C for one month. Aliquot and store at -80°C for 12 months.
<b>Reconstitution</b>	Reconstitute in 10mM PBS (pH7.4) to a concentration of 0.1-1.0 mg/mL. Do not vortex.

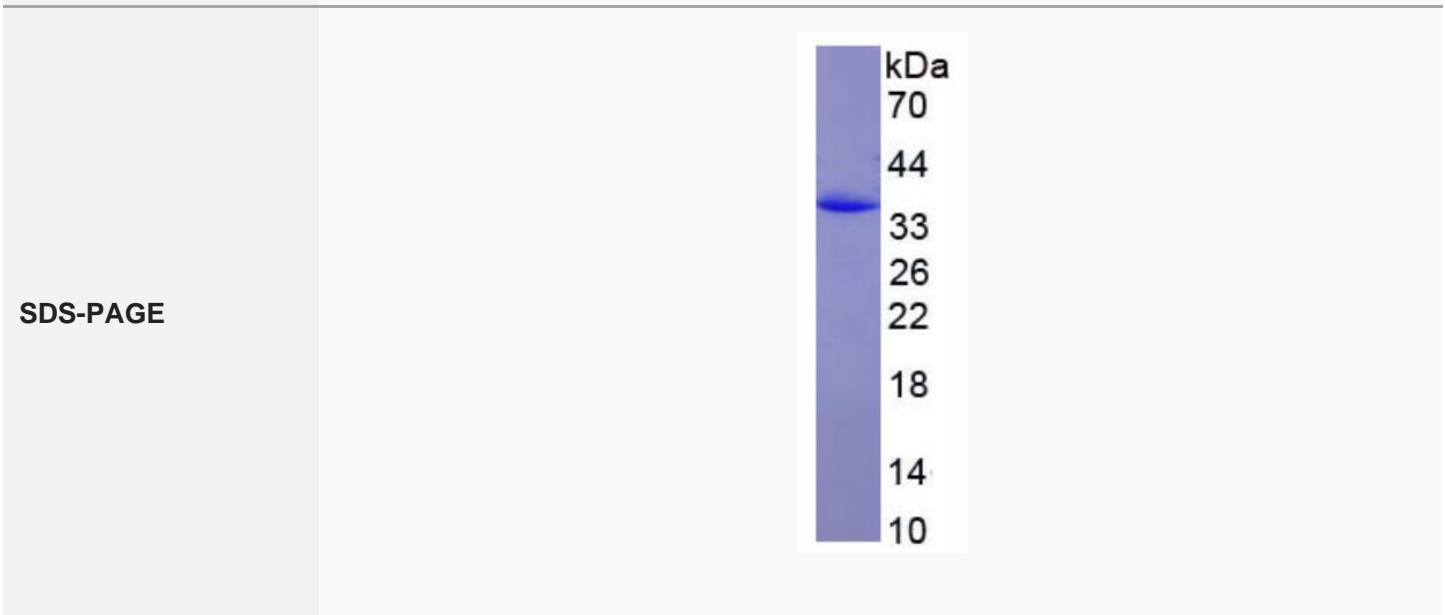
### GENE INFORMATION

 Tel: 1-631-559-9269 1-516-512-3133

 Email: [info@creative-biomart.com](mailto:info@creative-biomart.com)  Fax: 1-631-938-8127

 45-1 Ramsey Road, Shirley, NY 11967, USA

<b>Gene Name</b>	PRDM16 PR domain containing 16 [ Homo sapiens ]
<b>Official Symbol</b>	PRDM16
<b>Synonyms</b>	PRDM16; PR domain containing 16; PR domain zinc finger protein 16; KIAA1675; MDS1/EVI1 like; MEL1; MGC166915; PFM13; transcription factor MEL1; MDS1/EVI1-like gene 1;
<b>Gene ID</b>	63976
<b>mRNA Refseq</b>	NM_022114
<b>Protein Refseq</b>	NP_071397
<b>MIM</b>	605557
<b>UniProt ID</b>	Q9HAZ2



Tel: 1-631-559-9269 1-516-512-3133

Email: [info@creative-biomart.com](mailto:info@creative-biomart.com) Fax: 1-631-938-8127

45-1 Ramsey Road, Shirley, NY 11967, USA