

Recombinant Human PRDM2 protein, GST-tagged

Cat. No. PRDM2-196H Lot. No. (See product label)

SPECIFICATION

Product Overview	Recombinant Human PRDM2(1-340 aa) fused with GST tag at N-terminal was expressed in Insect cells.
Species	Human
Source	Insect Cells
ProteinLength	1-340 a.a.
Description	PRDM2 is a histone methyltransferase that specifically methylates lysine-9 of histone H3. PRDM2 is a retinoblastoma protein-interacting zinc finger protein and a tumor suppressor. Loss of PRDM2 activity through loss of mRNA expression, frameshift, deletion, and missense mutation is commonly found in many types of human cancers.
Form	50mM Tris-HCl, pH 7.5, 150mM NaCl, 10mM glutathione, 0.1mM EDTA, 0.25mM DTT, 0.1mM PMSF, 25% glycerol.
Molecular Mass	80 kDa
Purity	>85%
Applications	Methyltransferase Assay
Stability	1 year at -70 centigrade from the date of shipment

 Tel: 1-631-559-9269 1-516-512-3133

 Email: info@creative-biomart.com  Fax: 1-631-938-8127

 45-1 Ramsey Road, Shirley, NY 11967, USA

Storage Store product at –70 centigrade. For optimal storage, aliquot target into smaller quantities after centrifugation and store at recommended temperature. For most favorable performance, avoid repeated handling and multiple freeze/thaw cycles.

Concentration 0.1 µg/µl

GENE INFORMATION

Gene Name PRDM2 PR domain containing 2, with ZNF domain [Homo sapiens]

Official Symbol PRDM2

Gene ID 7799

mRNA Refseq NM_012231

Protein Refseq NP_036363

MIM 601196

UniProt ID Q13029

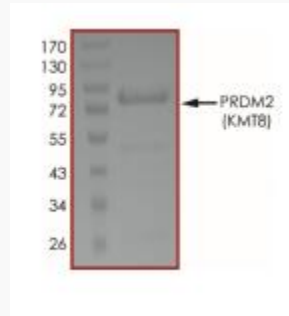
Chromosome Location 1p36

Function DNA binding; histone-lysine N-methyltransferase activity; metal ion binding; methyltransferase activity; sequence-specific DNA binding transcription factor activity; transferase activity; zinc ion binding; zinc ion binding;

 Tel: 1-631-559-9269 1-516-512-3133

 Email: info@creative-biomart.com  Fax: 1-631-938-8127

 45-1 Ramsey Road, Shirley, NY 11967, USA



Tel: 1-631-559-9269 1-516-512-3133

Email: info@creative-biomart.com Fax: 1-631-938-8127

45-1 Ramsey Road, Shirley, NY 11967, USA