

Recombinant Human PRDM2 protein, GST-tagged

Cat. No. PRDM2-3342H Lot. No. (See product label)

SPECIFICATION

Product Overview	Recombinant Human PRDM2 protein(NP_036363.2) (Met 1-Ala 200), containing the SET domain, was expressed in E. coli, fused with the GST tag at the N-terminus.
Species	Human
Source	E. coli
ProteinLength	1-200 aa
Form	Lyophilized from sterile 20mM Tris, 150mM NaCl, 0.5mM DTT, 0.5mM GSH, pH 8.0.
Molecular Mass	The recombinant human PRDM2/GST chimera consists of 432 amino acids and predicts a molecular mass of 49.6 kDa as estimated in SDS-PAGE under reducing conditions.
Purity	> 86 % as determined by SDS-PAGE
Storage	Store it under sterile conditions at -20°C to -80°C upon receiving. Recommend to aliquot the protein into smaller quantities for optimal storage. Avoid repeated freeze-thaw cycles.
Reconstitution	It is recommended that sterile water be added to the vial to prepare a stock solution of 0.2 ug/ul. Centrifuge the vial at 4°C before opening to recover the entire contents.
protein Refseq-	http://www.ncbi.nlm.nih.gov/protein/NP_001007258.1

 Tel: 1-631-559-9269 1-516-512-3133

 Email: info@creative-biomart.com  Fax: 1-631-938-8127

 45-1 Ramsey Road, Shirley, NY 11967, USA

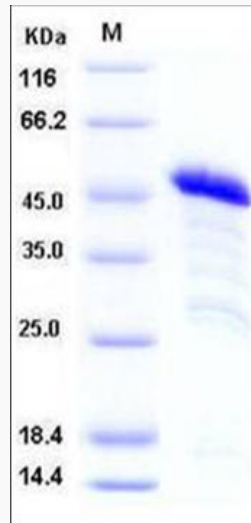
Weblink	
Unit ID	Q13029
Unit ID-Weblink	https://www.uniprot.org/uniprotkb/Q13029
GENE INFORMATION	
Gene Name	PRDM2 PR domain containing 2, with ZNF domain [Homo sapiens]
Official Symbol	PRDM2
Synonyms	PRDM2; PR domain containing 2, with ZNF domain; PR domain zinc finger protein 2; GATA 3 binding protein G3B; HUMHOXY1; KMT8; MTB ZF; MTE binding protein; retinoblastoma protein binding zinc finger protein; retinoblastoma protein interacting zinc finger protein; RIZ; RIZ1; RIZ2; zinc finger DNA binding protein; MTE-binding protein; zinc finger protein RIZ; GATA-3 binding protein G3B; GATA-3-binding protein G3B; lysine N-methyltransferase 8; PR domain-containing protein 2; zinc-finger DNA-binding protein; retinoblastoma protein-binding zinc finger protein; retinoblastoma protein-interacting zinc finger protein; MTB-ZF;
Gene ID	7799
mRNA Refseq	NM_001007257
protein Refseq	NP_001007258
MIM	601196

 Tel: 1-631-559-9269 1-516-512-3133

 Email: info@creative-biomart.com  Fax: 1-631-938-8127

 45-1 Ramsey Road, Shirley, NY 11967, USA

SDS-PAGE



 Tel: 1-631-559-9269 1-516-512-3133

 Email: info@creative-biomart.com  Fax: 1-631-938-8127

 45-1 Ramsey Road, Shirley, NY 11967, USA