

Recombinant Human PRDM2 Protein, Myc/DDK-tagged, C13 and N15-labeled

Cat. No. PRDM2-5535H **Lot. No.** (See product label)

SPECIFICATION

Product Overview	PRDM2 MS Standard C13 and N15-labeled recombinant protein (NP_001129082) with a C-terminal MYC/DDK tag, was expressed in HEK293 cells.
Species	Human
Source	HEK293
Description	This tumor suppressor gene is a member of a nuclear histone/protein methyltransferase superfamily. It encodes a zinc finger protein that can bind to retinoblastoma protein, estrogen receptor, and the TPA-responsive element (MTE) of the heme-oxygenase-1 gene. Although the functions of this protein have not been fully characterized, it may (1) play a role in transcriptional regulation during neuronal differentiation and pathogenesis of retinoblastoma, (2) act as a transcriptional activator of the heme-oxygenase-1 gene, and (3) be a specific effector of estrogen action. Multiple transcript variants encoding different isoforms have been found for this gene.
Molecular Mass	25.3 kDa
AA Sequence	MNQNTTEPVAATETLAEVPEHVLRLGLPEEVRLFPSAVDKTRIGVWATKPILKGKKFG PFVGDKKKRSQVKNNVYMWEVYYPNLGWMCIDATDPEKGNWLRVNWACSGEE QNLFPLEINRAIYYKTLKPIAPGEELLVWYNGEDNPEIAAAIEEERASARSKRSSPKSR KATASAWRPDALHQRPRTPSGSIGRSKLQLQPSSRDHSSKSRHSGCSLTAPEVTW

 Tel: 1-631-559-9269 1-516-512-3133

 Email: info@creative-biomart.com  Fax: 1-631-938-8127

 45-1 Ramsey Road, Shirley, NY 11967, USA

NQTRTRPLEQKLISEEDLAANDILDYKDDDDKV

Purity > 80% as determined by SDS-PAGE and Coomassie blue staining

Stability Stable for 3 months from receipt of products under proper storage and handling conditions.

Storage Store at -80 centigrade. Avoid repeated freeze-thaw cycles.

Concentration 50 µg/mL as determined by BCA

Storage Buffer 100 mM glycine, 25 mM Tris-HCl, pH 7.3.

GENE INFORMATION

Gene Name [PRDM2 PR/SET domain 2 \[Homo sapiens \(human\) \]](#)

Official Symbol [PRDM2](#)

Synonyms

PRDM2; PR domain containing 2, with ZNF domain; PR domain zinc finger protein 2; GATA 3 binding protein G3B; HUMHOXY1; KMT8; MTB ZF; MTE binding protein; retinoblastoma protein binding zinc finger protein; retinoblastoma protein interacting zinc finger protein; RIZ; RIZ1; RIZ2; zinc finger DNA binding protein; MTE-binding protein; zinc finger protein RIZ; GATA-3 binding protein G3B; GATA-3-binding protein G3B; lysine N-methyltransferase 8; PR domain-containing protein 2; zinc-finger DNA-binding protein; retinoblastoma protein-binding zinc finger protein; retinoblastoma protein-interacting zinc finger protein; MTB-ZF;

Gene ID [7799](#)

mRNA Refseq [NM_001135610](#)

 Tel: 1-631-559-9269 1-516-512-3133

 Email: info@creative-biomart.com  Fax: 1-631-938-8127

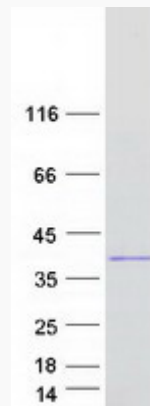
 45-1 Ramsey Road, Shirley, NY 11967, USA

Protein Refseq NP_001129082

MIM 601196

UniProt ID Q13029

SDS-PAGE



 Tel: 1-631-559-9269 1-516-512-3133

 Email: info@creative-biomart.com  Fax: 1-631-938-8127

 45-1 Ramsey Road, Shirley, NY 11967, USA