

Recombinant Human PRDX1 Protein, Myc/DDK-tagged, C13 and N15-labeled

Cat. No. PRDX1-3543H Lot. No. (See product label)

SPECIFICATION

Product Overview	PRDX1 MS Standard C13 and N15-labeled recombinant protein (NP_859048) with a C-terminal MYC/DDK tag, was expressed in HEK293 cells.
Species	Human
Source	HEK293
Description	This gene encodes a member of the peroxiredoxin family of antioxidant enzymes, which reduce hydrogen peroxide and alkyl hydroperoxides. The encoded protein may play an antioxidant protective role in cells, and may contribute to the antiviral activity of CD8(+) T-cells. This protein may have a proliferative effect and play a role in cancer development or progression. Four transcript variants encoding the same protein have been identified for this gene.
Molecular Mass	22.1 kDa
AA Sequence	MSSGNAKIGH PAPNFKATAVMPDGQFKDISLSDYKGYV VFFFYPLDFTFVCPTEIIA FSDRAEEFKKLNQCQVIGASVDSHFCHLAWVNTPKKQGGLGPMNIPLVSDPKRTIAQ DYGVLKADEGISFRGLFIIDDKGILRQITVNDLPVGRSVDLRLVQAFQFTDKHGEV CPAGWKPGSDTIKPDVQKSKEYFSKQKTRTRPLEQKLISEEDLAANDILDYKDDDDK V
Purity	> 80% as determined by SDS-PAGE and Coomassie blue staining

 Tel: 1-631-559-9269 1-516-512-3133

 Email: info@creative-biomart.com  Fax: 1-631-938-8127

 45-1 Ramsey Road, Shirley, NY 11967, USA

Stability	Stable for 3 months from receipt of products under proper storage and handling conditions.
Storage	Store at -80 centigrade. Avoid repeated freeze-thaw cycles.
Concentration	50 µg/mL as determined by BCA
Storage Buffer	100 mM glycine, 25 mM Tris-HCl, pH 7.3.

GENE INFORMATION

Gene Name	PRDX1 peroxiredoxin 1 [Homo sapiens (human)]
Official Symbol	PRDX1
Synonyms	PRDX1; peroxiredoxin 1; PAGA; peroxiredoxin-1; NKEFA; NKEF-A; thioredoxin peroxidase 2; proliferation-associated gene A; natural killer-enhancing factor A; proliferation-associated gene protein; natural killer cell-enhancing factor A; thioredoxin-dependent peroxide reductase 2; PAG; PAGB; PRX1; PRXI; MSP23; TDPX2;
Gene ID	5052
mRNA Refseq	NM_181697
Protein Refseq	NP_859048
MIM	176763
UniProt ID	Q06830

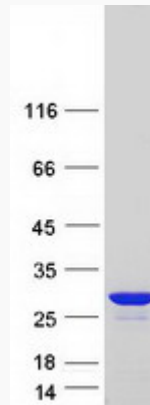
 Tel: 1-631-559-9269 1-516-512-3133

 Email: info@creative-biomart.com  Fax: 1-631-938-8127

 45-1 Ramsey Road, Shirley, NY 11967, USA



SDS-PAGE



Tel: 1-631-559-9269 1-516-512-3133

Email: info@creative-biomart.com Fax: 1-631-938-8127

45-1 Ramsey Road, Shirley, NY 11967, USA