

# Recombinant Human PRDX1 Protein (Met1-Lys199), C-His and N-His tagged

Cat. No. PRDX1-4792H Lot. No. (See product label)

## SPECIFICATION

<b>Product Overview</b>	Recombinant human PRDX1 (Met1-Lys199) fused with the C-terminal His tag and N-terminal His tag was expressed in E. coli.
<b>Species</b>	Human
<b>Source</b>	E.coli
<b>ProteinLength</b>	Met1-Lys199
<b>Form</b>	Lyophilized powder/frozen liquid
<b>Molecular Mass</b>	21.89 kDa
<b>Purity</b>	>90% as determined by SDS-PAGE.
<b>Notes</b>	For research use only.
<b>Storage</b>	Use a manual defrost freezer and avoid repeated freeze thaw cycles. Store at 2 to 8 centigrade for one week. Store at -20 to -80 centigrade for twelve months from the date of receipt.
<b>Storage Buffer</b>	Supplied as solution form in PBS or lyophilized from PBS.
<b>Reconstitution</b>	Reconstitute in sterile water for a stock solution.

 Tel: 1-631-559-9269 1-516-512-3133

 Email: [info@creative-biomart.com](mailto:info@creative-biomart.com)  Fax: 1-631-938-8127

 45-1 Ramsey Road, Shirley, NY 11967, USA

**Shipping** They are shipped out with dry ice/blue ice unless customers require otherwise.

## GENE INFORMATION

**Gene Name** [PRDX1 peroxiredoxin 1 \[ Homo sapiens \(human\) \]](#)

**Official Symbol** [PRDX1](#)

**Synonyms** PRDX1; peroxiredoxin 1; PAGA; peroxiredoxin-1; NKEFA; NKEF-A; thioredoxin peroxidase 2; proliferation-associated gene A; natural killer-enhancing factor A; proliferation-associated gene protein; natural killer cell-enhancing factor A; thioredoxin-dependent peroxide reductase 2; PAG; PAGB; PRX1; PRXI; MSP23; TDPX2;

**Gene ID** [5052](#)

**mRNA Refseq** [NM\\_001202431](#)

**Protein Refseq** [NP\\_001189360](#)

**MIM** [176763](#)

**UniProt ID** [Q06830](#)

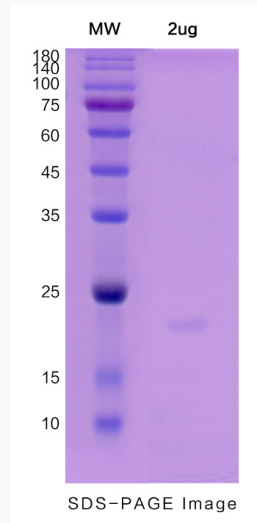
 Tel: 1-631-559-9269 1-516-512-3133

 Email: [info@creative-biomart.com](mailto:info@creative-biomart.com)  Fax: 1-631-938-8127

 45-1 Ramsey Road, Shirley, NY 11967, USA



**SDS-PAGE**



Tel: 1-631-559-9269 1-516-512-3133

Email: [info@creative-biomart.com](mailto:info@creative-biomart.com) Fax: 1-631-938-8127

45-1 Ramsey Road, Shirley, NY 11967, USA