

# Recombinant Human PRELP Protein, Myc/DDK-tagged, C13 and N15-labeled

Cat. No. PRELP-6145H Lot. No. (See product label)

## SPECIFICATION

<b>Product Overview</b>	PRELP MS Standard C13 and N15-labeled recombinant protein (NP_958505) with a C-terminal MYC/DDK tag, was expressed in HEK293 cells.
<b>Species</b>	Human
<b>Source</b>	HEK293
<b>Description</b>	The protein encoded by this gene is a leucine-rich repeat protein present in connective tissue extracellular matrix. This protein functions as a molecule anchoring basement membranes to the underlying connective tissue. This protein has been shown to bind type I collagen to basement membranes and type II collagen to cartilage. It also binds the basement membrane heparan sulfate proteoglycan perlecan. This protein is suggested to be involved in the pathogenesis of Hutchinson-Gilford progeria (HGP), which is reported to lack the binding of collagen in basement membranes and cartilage. Alternatively spliced transcript variants encoding the same protein have been observed.
<b>Molecular Mass</b>	43.8 kDa
<b>AA Sequence</b>	MRSPLCWLLPLLILASVAQGQPTRRRPRPGTGPGRRRPRRPRPTPSFPQPDEPAEPT DLPPPLPPGPPSIFPDCPRECYCPPDFPSALYCDSRNLKVPVIPPRIHYLYLQNNFIT ELPVESFQATGLRWINLDNNRIRKIDQRVLEKLPGLVFLYMEKNQLEEVPSALPRNL EQLRLSQNHISRIPPGVFSKLENNLLLDLQHNRLSDGVFKPDTFHGLKNLMQLNLAH

 Tel: 1-631-559-9269 1-516-512-3133

 Email: [info@creative-biomart.com](mailto:info@creative-biomart.com)  Fax: 1-631-938-8127

 45-1 Ramsey Road, Shirley, NY 11967, USA



NILRKMPPRVPTAIHQLYLDSNKIETIPNGYFKSFPNLAFIRLNYNKLTDRGLPKNSFNI  
SNLLVLHLSHNRISVPAINNRLEHLYLNNSIEKINGTQICPNDLVAFHDFSSDLENV  
PHLRYLRLDGNYLKPPIPLDLMMCFRLLQSVVITRTRPLEQKLISEEDLAANDILDYKD  
DDDKV

**Purity** > 80% as determined by SDS-PAGE and Coomassie blue staining

**Stability** Stable for 3 months from receipt of products under proper storage and handling conditions.

**Storage** Store at -80 centigrade. Avoid repeated freeze-thaw cycles.

**Concentration** 50 µg/mL as determined by BCA

**Storage Buffer** 100 mM glycine, 25 mM Tris-HCl, pH 7.3.

## GENE INFORMATION

**Gene Name** PRELP proline/arginine-rich end leucine-rich repeat protein [ Homo sapiens (human) ]

**Official Symbol** PRELP

**Synonyms** PRELP; proline/arginine-rich end leucine-rich repeat protein; proline arginine rich end leucine rich repeat protein; prolargin; prolargin proteoglycan; SLRR2A; proline-arginine-rich end leucine-rich repeat protein; 55 kDa leucine-rich repeat protein of articular cartilage; MST161; MSTP161; MGC45323;

**Gene ID** 5549

**mRNA Refseq** NM\_201348

Tel: 1-631-559-9269 1-516-512-3133

Email: [info@creative-biomart.com](mailto:info@creative-biomart.com) Fax: 1-631-938-8127

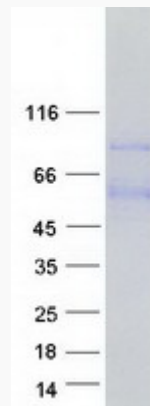
45-1 Ramsey Road, Shirley, NY 11967, USA

**Protein Refseq**      NP\_958505

**MIM**                    601914

**UniProt ID**            P51888

**SDS-PAGE**



 Tel: 1-631-559-9269    1-516-512-3133

 Email: [info@creative-biomart.com](mailto:info@creative-biomart.com)     Fax: 1-631-938-8127

 45-1 Ramsey Road, Shirley, NY 11967, USA