

Recombinant Human PREP Protein, Myc/DDK-tagged, C13 and N15-labeled

Cat. No. PREP-3430H **Lot. No.** (See product label)

SPECIFICATION

Product Overview	PREP MS Standard C13 and N15-labeled recombinant protein (NP_002717) with a C-terminal MYC/DDK tag, was expressed in HEK293 cells.
Species	Human
Source	HEK293
Description	The protein encoded by this gene is a cytosolic prolyl endopeptidase that cleaves peptide bonds on the C-terminal side of prolyl residues within peptides that are up to approximately 30 amino acids long. Prolyl endopeptidases have been reported to be involved in the maturation and degradation of peptide hormones and neuropeptides.
Molecular Mass	80.7 kDa
AA Sequence	<p> MLSLQYPDVYRDETAVQDYHGHKICDPYAWLEDPDSEQTKAFVEAQNKITVPFLEQ CPIRGLYKERMTELYDYPKYSCHFKKGKRYFYFYNTGLQNQRVLYVQDSLEGEARV FLDPNILSDDGTVALRGYAFSEEDGEYFAYGLSASGSDWVTIKFMKVDGAKELPDVLE RVKFSCMAWTHDGKGMFYNSYPQQDGKSDGTETSTNLHQKLYYHVLGTDQSEDIL CAEFPDEPKWMGGAELSDDGRYVLLSIREGCDPVNRLWYCDLQQESSGIAGILKWW KLIDNFEGEYDYVTNEGTVFTFKTNRQSPNYRVINIDFRDPEESKWKVLVPEHEKDV LEWIACVRSNFLVLCYLHDVKNILQLHDLTTGALLKTFPLDVGSIVGYSGQKKDTEIFY QFTSFLSPGIIYHCDLTKEELEPRVFREVTVKGIDASDYQTVQIFYPSKDGTKIPMFIV HKKGIKLDGSHPAFLYGYGGFNISITPNYSVSRILIFVRHMGGILAVANIRGGGEYGET </p>

 Tel: 1-631-559-9269 1-516-512-3133

 Email: info@creative-biomart.com  Fax: 1-631-938-8127

 45-1 Ramsey Road, Shirley, NY 11967, USA

WHKGGILANKQNCFFDFQCAAELYLIKEGYTSPKRLTINGGSSNGGLLVAACANQRPD
 LFGCVIAQVGVMDMLKFHKYTIGHAWTTDYGCSDSKQHFEWLKYSPLHNVLPEA
 DDIQYPSMLLLTADHDDRVPPLHSLKFIATLQYIVGRSRKQSNPLLIHVDTKAGHGAG
 KPTAKVIEEVSDMFAFIARCLNVDWIPTRTRPLEQKLISEEDLAANDILDYKDDDDKV

Purity > 80% as determined by SDS-PAGE and Coomassie blue staining

Stability Stable for 3 months from receipt of products under proper storage and handling conditions.

Storage Store at -80 centigrade. Avoid repeated freeze-thaw cycles.

Concentration 50 µg/mL as determined by BCA

Storage Buffer 100 mM glycine, 25 mM Tris-HCl, pH 7.3.

GENE INFORMATION

Gene Name PREP prolyl endopeptidase [Homo sapiens (human)]

Official Symbol PREP

Synonyms PREP; prolyl endopeptidase; prolyl oligopeptidase; post-proline cleaving enzyme; dJ355L5.1 (prolyl endopeptidase); PE; PEP; MGC16060;

Gene ID 5550

mRNA Refseq NM_002726

Protein Refseq NP_002717

 Tel: 1-631-559-9269 1-516-512-3133

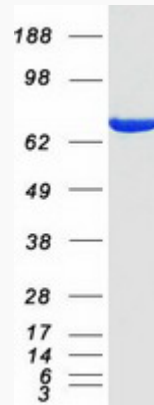
 Email: info@creative-biomart.com  Fax: 1-631-938-8127

 45-1 Ramsey Road, Shirley, NY 11967, USA

MIM 600400

UniProt ID P48147

SDS-PAGE



 Tel: 1-631-559-9269 1-516-512-3133

 Email: info@creative-biomart.com  Fax: 1-631-938-8127

 45-1 Ramsey Road, Shirley, NY 11967, USA