

Recombinant Human PREP protein, His&Myc-tagged

Cat. No. PREP-542H Lot. No. (See product label)

SPECIFICATION

Product Overview	Recombinant Human PREP protein(P48147)(2-710aa), fused with N-terminal His tag and C-terminal Myc tag, was expressed in E.coli.
Species	Human
Source	E.coli
ProteinLength	2-710aa
Form	If the delivery form is liquid, the default storage buffer is Tris/PBS-based buffer, 5%-50% glycerol. If the delivery form is lyophilized powder, the buffer before lyophilization is Tris/PBS-based buffer, 6% Trehalose, pH 8.0.
Molecular Mass	88.0 kDa
Purity	Greater than 85% as determined by SDS-PAGE.
Storage	Store at -20°C/-80°C upon receipt, aliquoting is necessary for mutiple use. Avoid repeated freeze-thaw cycles.
Reconstitution	We recommend that this vial be briefly centrifuged prior to opening to bring the contents to the bottom. Please reconstitute protein in deionized sterile water to a concentration of 0.1-1.0 mg/mL. We recommend to add 5-50% of glycerol (final concentration) and aliquot for long-term storage at -20°C/-80°C.

 Tel: 1-631-559-9269 1-516-512-3133

 Email: info@creative-biomart.com  Fax: 1-631-938-8127

 45-1 Ramsey Road, Shirley, NY 11967, USA

AA Sequence

LSLQYPDVYRDETAVQDYHGHKICDPYAWLEDPDSEQTKAFVEAQNKITVPFLEQC
 PIRGLYKERMTELYDYPKYSCHFKKGKRYFYFYNTGLQNQRVLYVQDSLEGEARVF
 LDPNILSDDGTVALRGYAFSEEDGEYFAYGLSASGSDWVTIKFMKVDGAKELPDVLER
 VKFSCMAWTHDGKGMFYNSYPQQDGKSDGTETSTNLHQKLYYHVLGTDQSEDILC
 AEFDPDEPKWMGGAELSDDGRYVLLSIREGCDPVNRLWYCDLQQESSGIAGILKWVK
 LIDNFEGEYDYVTNEGTVFTFKTNRQSPNYRVINIDFRDPEESKWKVLVPEHEKDV
 EWACVRSNFLVLCYLHDVKNILQLHDLTTGALLKTFPLDVGSIVGYSGQKKDTEIFY
 QFTSFLSPGIIYHCDLTKEELEPRVFREVTVKGIDASDYQTVQIFYPSKDGTKIPMFIV
 HKKGIKLDGSHPAFLYGYGGFNISITPNYSVSRILIFVRHMGGILAVANIRGGGEYGET
 WHKGGILANKQNCFFDQCAAELYLIKEGYTSPKRLTINGGSNGGLLVAACANQRPD
 LFGCVIAQVGVMDMLKFHKYTIGHAWTTDYGCSDSKQHFEWLKYSPLHNVLPEA
 DDIQYPSMLLLTADHDDRVPVPLHSLKFIATLQYIVGRSRKQSNPLLIHVDTKAGHGAG
 KPTAKVIEEVSDMFAFIARCLNVDWIP

GENE INFORMATION

Gene Name	PREP prolyl endopeptidase [Homo sapiens]
Official Symbol	PREP
Synonyms	PREP; prolyl endopeptidase; prolyl oligopeptidase; post-proline cleaving enzyme; dJ355L5.1 (prolyl endopeptidase); PE; PEP; MGC16060;
Gene ID	5550
mRNA Refseq	NM_002726
Protein Refseq	NP_002717
MIM	600400

 Tel: 1-631-559-9269 1-516-512-3133

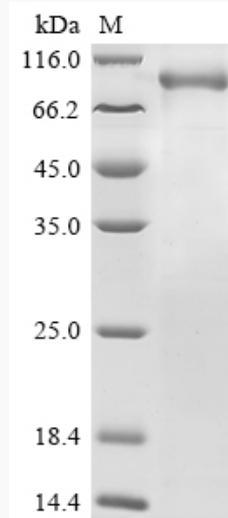
 Email: info@creative-biomart.com  Fax: 1-631-938-8127

 45-1 Ramsey Road, Shirley, NY 11967, USA

UniProt ID

P48147

SDS-PAGE



 Tel: 1-631-559-9269 1-516-512-3133

 Email: info@creative-biomart.com  Fax: 1-631-938-8127

 45-1 Ramsey Road, Shirley, NY 11967, USA