

## Recombinant Human PRF1 Protein, His-Tagged

Cat. No. PRF1-01H Lot. No. (See product label)

### SPECIFICATION

<b>Product Overview</b>	Recombinant Human PRF1 Protein, His-tagged was expressed in E. coli cell
<b>Species</b>	Human
<b>Source</b>	E.coli
<b>ProteinLength</b>	22-555 a.a.
<b>Description</b>	<p>This gene encodes a protein with structural similarities to complement component C9 that is important in immunity. This protein forms membrane pores that allow the release of granzymes and subsequent cytolysis of target cells. Whether pore formation occurs in the plasma membrane of target cells or in an endosomal membrane inside target cells is subject to debate. Mutations in this gene are associated with a variety of human disease including diabetes, multiple sclerosis, lymphomas, autoimmune lymphoproliferative syndrome (ALPS), aplastic anemia, and familial hemophagocytic lymphohistiocytosis type 2 (FHL2), a rare and lethal autosomal recessive disorder of early childhood.</p>
<b>Applications</b>	ELISA, EIA, protein-protein interaction studies, Western Blotting, Dot Blotting, Immunoprecipitation, Protein Array
<b>Purification</b>	His-tag affinity purification by immobilized metal ion affinity chromatography (IMAC)
<b>Form</b>	Liquid

 Tel: 1-631-559-9269 1-516-512-3133

 Email: [info@creative-biomart.com](mailto:info@creative-biomart.com)  Fax: 1-631-938-8127

 45-1 Ramsey Road, Shirley, NY 11967, USA

<b>Endotoxin</b>	Not determined
<b>Purity</b>	> 90%
<b>Expressed Region</b>	Pro22-Trp555
<b>Conjugation/Tag Notes</b>	N-terminal 6x histidine tag
<b>Storage Buffer</b>	Supplied as a 0.45 um filtered solution in 100 mM NaH <sub>2</sub> PO <sub>4</sub> (pH 7.4), 0.3 M NaCl, 8 M urea.
<b>Storage</b>	Upon arrival, the protein may be stored for 2 weeks at 4 °C. For long term storage, it is recommended to store at -20 °C or -80 °C in appropriate aliquots. Avoid repeated freeze-thaw cycles.
<b>Concentration</b>	Lot specific (see the label on the vial)
<b>Purity determined by</b>	SDS-PAGE under reducing conditions and visualized by Coomassie blue staining
<b>Molecular Mass</b>	59.2 kDa
<b>Usage</b>	This product is furnished for LABORATORY RESEARCH USE ONLY. Not for diagnostic or therapeutic use.
<b>Preservative</b>	None
<b>Shipping</b>	Ice packs

## GENE INFORMATION

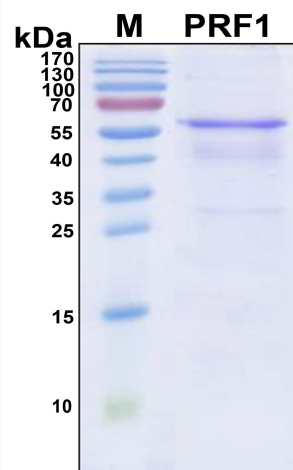
**Gene Name**      [PRF1 perforin 1 \[ Homo sapiens \(human\) \]](#)

 Tel: 1-631-559-9269    1-516-512-3133

 Email: [info@creative-biomart.com](mailto:info@creative-biomart.com)     Fax: 1-631-938-8127

 45-1 Ramsey Road, Shirley, NY 11967, USA

<b>Official Symbol</b>	PRF1
<b>Synonyms</b>	Perforin-1, P1, Cytolysin, Lymphocyte pore-forming protein, PFP, Perforin 1, Preforming Protein, PFN1, Lymphocyte Pore Forming Protein, FLH2, HPLH2, Perforin
<b>Gene ID</b>	5551
<b>mRNA Refseq</b>	NM_001083116.3
<b>Protein Refseq</b>	NP_001076585.1
<b>UniProt ID</b>	P14222
<b>MIM</b>	170280

**SDS-PAGE Image**

 Tel: 1-631-559-9269 1-516-512-3133

 Email: [info@creative-biomart.com](mailto:info@creative-biomart.com)  Fax: 1-631-938-8127

 45-1 Ramsey Road, Shirley, NY 11967, USA