

# Recombinant Human Perforin 1 Protein

Cat. No. PRF1-02H Lot. No. (See product label)

## SPECIFICATION

**Product Overview** Recombinant human perforin 1 (PRF1) (aa 32-316) without tag was expressed in E.coli.

**Species** Human

**Source** E.coli

**ProteinLength** 32-316 aa

**Description** This gene encodes a protein with structural similarities to complement component C9 that is important in immunity. This protein forms membrane pores that allow the release of granzymes and subsequent cytolysis of target cells. Whether pore formation occurs in the plasma membrane of target cells or in an endosomal membrane inside target cells is subject to debate. Mutations in this gene are associated with a variety of human disease including diabetes, multiple sclerosis, lymphomas, autoimmune lymphoproliferative syndrome (ALPS), aplastic anemia, and familial hemophagocytic lymphohistiocytosis type 2 (FHL2), a rare and lethal autosomal recessive disorder of early childhood.

**Form** Lyophilized

**Molecular Mass** 62 kDa

**Purity** ≥ 95%

 Tel: 1-631-559-9269 1-516-512-3133

 Email: [info@creative-biomart.com](mailto:info@creative-biomart.com)  Fax: 1-631-938-8127

 45-1 Ramsey Road, Shirley, NY 11967, USA

<b>Stability</b>	Stable at 2-8 centigrade for one month. Stable at -80 centigrade for up to 12 months.
<b>Storage</b>	Short Term Storage: +4 centigrade Long Term Storage: -80 centigrade Avoid freeze/thaw cycles. After opening, prepare aliquots and store at -80 centigrade.
<b>Reconstitution</b>	Reconstitute in 20mM Tris, 150mM NaCl (pH 8.0) to a concentration of 0.1-1.0 mg/mL. Do not vortex.
<b>Shipping</b>	Blue Ice

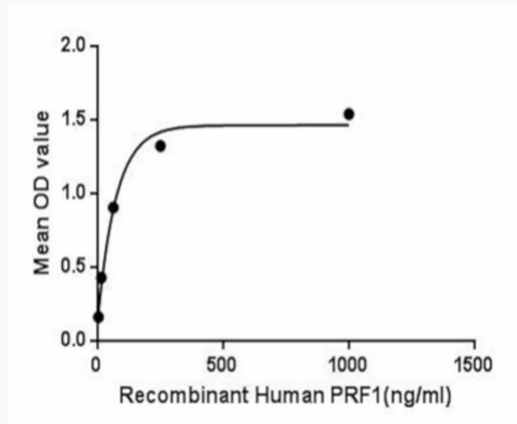
## GENE INFORMATION

<b>Gene Name</b>	PRF1 perforin 1 [ Homo sapiens (human) ]
<b>Official Symbol</b>	PRF1
<b>Synonyms</b>	PRF1; perforin 1; P1; PFP; HPLH2; perforin-1; cytolysin; lymphocyte pore-forming protein; perforin 1 (pore forming protein)
<b>Gene ID</b>	5551
<b>mRNA Refseq</b>	NM_005041
<b>Protein Refseq</b>	NP_005032
<b>MIM</b>	170280
<b>UniProt ID</b>	P14222

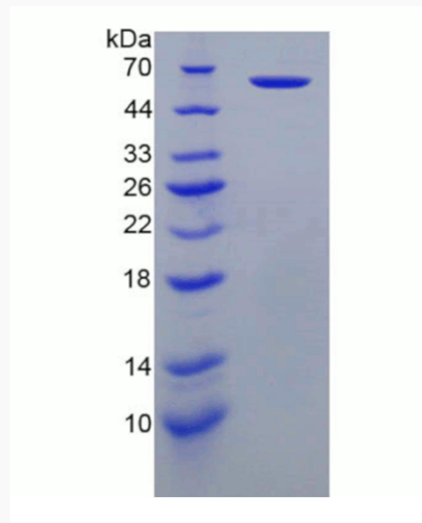
 Tel: 1-631-559-9269 1-516-512-3133

 Email: [info@creative-biomart.com](mailto:info@creative-biomart.com)  Fax: 1-631-938-8127

 45-1 Ramsey Road, Shirley, NY 11967, USA

**Activity**


Dose Dependent Binding Activity of PRF1 with CRT. A binding ELISA was performed to detect interaction with Calreticulin (CRT), an interactor of PRF1. PRF1 was serially diluted in PBS and incubated in CRT-coated wells. The binding activity of PRF1 and CRT occurs in a dose dependent manner.

**SDS-PAGE**


SDS-PAGE of Active Recombinant PRF1, Human

Tel: 1-631-559-9269 1-516-512-3133

Email: [info@creative-biomart.com](mailto:info@creative-biomart.com) Fax: 1-631-938-8127

45-1 Ramsey Road, Shirley, NY 11967, USA