

Active Recombinant Full Length Human PRF1 protein

Cat. No. PRF1-158H Lot. No. (See product label)

SPECIFICATION

Product Overview	Recombinant Human PRF1 protein(Pro22~Trp555), fused to N-terminal His tag, was expressed in E. coli.
Species	Human
Source	E.coli
ProteinLength	22-555 a.a.
Form	20mM Tris, 150mM NaCl, pH8.0, containing 0.05% sarcosyl and 5% trehalose
Molecular Mass	63kDa as determined by SDS-PAGE reducing conditions.
Endotoxin	< 1.0 EU per µg protein as determined by the LAL method.
Purity	> 80 %
Storage	Avoid repeated freeze/thaw cycles. Store at 2-8°C for one month. Aliquot and store at -80°C for 12 months.
Reconstitution	Reconstitute in 20mM Tris, 150mM NaCl (pH8.0) to a concentration of 0.1-1.0mg/mL. Do not vortex.

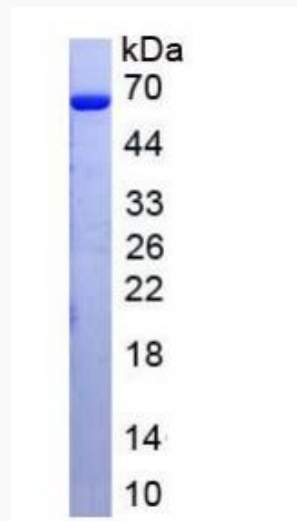
GENE INFORMATION

 Tel: 1-631-559-9269 1-516-512-3133

 Email: info@creative-biomart.com  Fax: 1-631-938-8127

 45-1 Ramsey Road, Shirley, NY 11967, USA

Gene Name	PRF1 perforin 1 (pore forming protein) [Homo sapiens]
Official Symbol	PRF1
Synonyms	PRF1; perforin 1 (pore forming protein); perforin-1; HPLH2; P1; Perforin; perforin 1 (preforming protein); PFP; cytolysin; lymphocyte pore forming protein; lymphocyte pore-forming protein; FLH2; PFN1; MGC65093;
Gene ID	5551
mRNA Refseq	NM_001083116
Protein Refseq	NP_001076585
MIM	170280
UniProt ID	P14222

SDS-PAGE


 Tel: 1-631-559-9269 1-516-512-3133

 Email: info@creative-biomart.com  Fax: 1-631-938-8127

 45-1 Ramsey Road, Shirley, NY 11967, USA

**Hemolysis activity of
recombinant human
PRF1**

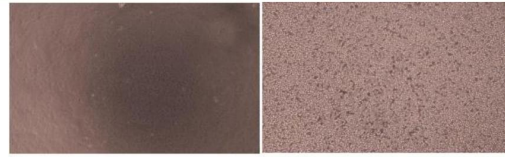


Figure 1. Hemolysis activity of recombinant human PRF1
(A) 0.25% RaE treated with 2.5µg/ml PRF1 for 20h;
(B) 0.25% RaE treated with without PRF1.

 Tel: 1-631-559-9269 1-516-512-3133

 Email: info@creative-biomart.com  Fax: 1-631-938-8127

 45-1 Ramsey Road, Shirley, NY 11967, USA