

Recombinant Human PRG2 protein, His & MBP-tagged

Cat. No. PRG2-1745H Lot. No. (See product label)

SPECIFICATION

Product Overview	Recombinant Human PRG2 aa. (Gln105~Tyr222) fused with N-terminal His & MBP tag was produced in E. coli cells.
Species	Human
Source	E.coli
ProteinLength	Gln105~Tyr222
Form	Freeze-dried powder
Molecular Mass	64kDa as determined by SDS-PAGE reducing conditions.
Endotoxin	<1.0EU per 1ug (determined by the LAL method)
Purity	>92%
Characteristic	The isoelectric point is 11.
Applications	SDS-PAGE; WB; ELISA; IP; CoIP; Purification; Amine Reactive Labeling.
Stability	The thermal stability is described by the loss rate of the target protein. The loss rate was determined by accelerated thermal degradation test, that is, incubate the protein at 37°C for 48h, and no obvious degradation and precipitation were observed. (Referring from China Biological Products Standard, which was calculated by the

 Tel: 1-631-559-9269 1-516-512-3133

 Email: info@creative-biomart.com  Fax: 1-631-938-8127

 45-1 Ramsey Road, Shirley, NY 11967, USA

Arrhenius equation.) The loss of this protein is less than 5% within the expiration date under appropriate storage condition.

Storage

Avoid repeated freeze/thaw cycles. Store at 2-8°C for one month. Aliquot and store at -80°C for 12 months.

Concentration

200ug/mL

Storage buffer

PBS, pH7.4, containing 1mM DTT, 5% trehalose, 0.01% sarcosyl and Proclin300.

Reconstitution

Reconstitute in PBS (pH7.4) to a concentration of 0.1-1.0 mg/mL. Do not vortex.

GENE INFORMATION

Gene Name

PRG2 proteoglycan 2, pro eosinophil major basic protein [Homo sapiens (human)]

Official Symbol

PRG2

Synonyms

PRG2; proteoglycan 2, pro eosinophil major basic protein; MBP; BMPG; MBP1; proMBP; bone marrow proteoglycan; eosinophil granule major basic protein; eosinophil major basic protein; natural killer cell activator; proteoglycan 2 preproprotein; proteoglycan 2, bone marrow (natural killer cell activator, eosinophil granule major basic protein)

Gene ID

5553

mRNA Refseq

NM_001243245.2

Protein Refseq

NP_001230174.1

UniProt ID

P13727

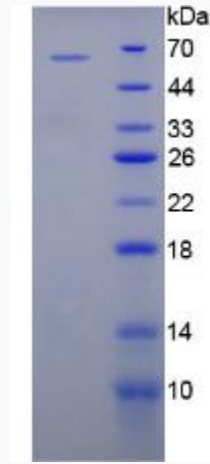
 Tel: 1-631-559-9269 1-516-512-3133

 Email: info@creative-biomart.com  Fax: 1-631-938-8127

 45-1 Ramsey Road, Shirley, NY 11967, USA



SDS-PAGE



Tel: 1-631-559-9269 1-516-512-3133

Email: info@creative-biomart.com Fax: 1-631-938-8127

45-1 Ramsey Road, Shirley, NY 11967, USA