

Active Recombinant Full Length Human PRKAA1 / AMPK (A1/B1/G1) Protein, GST-tagged

Cat. No. PRKAA1-2412HF **Lot. No.** (See product label)

SPECIFICATION

Product Overview

Full-length human AMPK α 1 [1-550(end) amino acids of accession number NP_006242.4] was co- expressed as N-terminal GST-fusion protein (90 kDa) with GST-PRKAB1 [1-270(end) amino acids of accession number NP_006244.2] and PRKAG1 [1-331(end) amino acids of accession number NP_002724.1] using baculovirus expression system. GST-AMPK α 1/ β 1/ γ 1 was purified by using glutathione sepharose chromatography and activated with His-tagged CaMKK1. Activated GST- AMPK α 1/ β 1/ γ 1 was purified using glutathione sepharose chromatography.

Species

Human

Source

Sf21 Cells

ProteinLength

1-550(end)

Form

50 mM Tris-HCl, 150 mM NaCl, 0.05% Brij35, 1 mM DTT, 10% glycerol, pH7.5

Bio-activity

The activity was measured by off-chip mobility shift assay. The enzyme was incubated with fluorescence-labeled substrate and Mg(or Mn)/ATP. The phosphorylated and unphosphorylated substrates were separated and detected by LabChip[™]3000.

Purity

81%

 Tel: 1-631-559-9269 1-516-512-3133

 Email: info@creative-biomart.com  Fax: 1-631-938-8127

 45-1 Ramsey Road, Shirley, NY 11967, USA

Applications SDS-PAGE

Storage Store at -80C. Avoid repeating freeze-thaws.

GENE INFORMATION

Gene Name protein kinase, AMP-activated, alpha 1 catalytic subunit

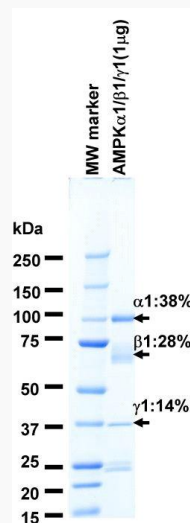
Official Symbol PRKAA1

Synonyms PRKAA1;AMPK;AMPKa1

Protein Refseq [NP_006242.4](#)

UniProt ID [Q13131](#)

SDS-PAGE

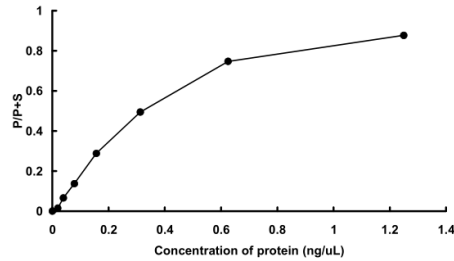


The purity was assessed by SDS-PAGE/CBB staining.

Tel: 1-631-559-9269 1-516-512-3133

Email: info@creative-biomart.com Fax: 1-631-938-8127

45-1 Ramsey Road, Shirley, NY 11967, USA

Activity data**Activity data**

The activity was measured by off-chip mobility shift assay. The enzyme was incubated with fluorescence-labeled substrate and Mg(or Mn)/ATP. The phosphorylated and unphosphorylated substrates were separated and detected by LabChip™3000.

 Tel: 1-631-559-9269 1-516-512-3133

 Email: info@creative-biomart.com  Fax: 1-631-938-8127

 45-1 Ramsey Road, Shirley, NY 11967, USA