

# Recombinant Human PRKAA1 Protein (Met10-Gln559), N-His tagged

Cat. No. PRKAA1-5981H Lot. No. (See product label)

## SPECIFICATION

<b>Product Overview</b>	Recombinant human PRKAA1/AMPK alpha 1 (Met10-Gln559) fused with the N-His tag was expressed in E. coli.
<b>Species</b>	Human
<b>Source</b>	E.coli
<b>ProteinLength</b>	Met10-Gln559
<b>Form</b>	Lyophilized powder/frozen liquid
<b>Molecular Mass</b>	65.12 kDa
<b>Purity</b>	> 90 % as determined by SDS-PAGE
<b>Notes</b>	For research use only.
<b>Storage</b>	Use a manual defrost freezer and avoid repeated freeze thaw cycles. Store at 2 to 8 centigrade for one week. Store at -20 to -80 centigrade for twelve months from the date of receipt.
<b>Storage Buffer</b>	0.01M PBS, pH 7.4, 0.02 % NLS
<b>Reconstitution</b>	Reconstitute in sterile water for a stock solution.

 Tel: 1-631-559-9269 1-516-512-3133

 Email: [info@creative-biomart.com](mailto:info@creative-biomart.com)  Fax: 1-631-938-8127

 45-1 Ramsey Road, Shirley, NY 11967, USA

**Shipping**

They are shipped out with dry ice/blue ice unless customers require otherwise.

**GENE INFORMATION**
**Gene Name**

PRKAA1 protein kinase, AMP-activated, alpha 1 catalytic subunit [ Homo sapiens (human) ]

**Official Symbol**

PRKAA1

**Synonyms**

PRKAA1; protein kinase, AMP-activated, alpha 1 catalytic subunit; 5-AMP-activated protein kinase catalytic subunit alpha-1; AMPK; alpha; 1; AMPKa1; AMPK alpha 1; AMPK subunit alpha-1; tau-protein kinase PRKAA1; AMP -activate kinase alpha 1 subunit; AMP-activated protein kinase, catalytic, alpha-1; 5-AMP-activated protein kinase, catalytic alpha-1 chain; MGC33776; MGC57364;

**Gene ID**

5562

**mRNA Refseq**

NM\_006251

**Protein Refseq**

NP\_006242

**MIM**

602739

**UniProt ID**

Q13131

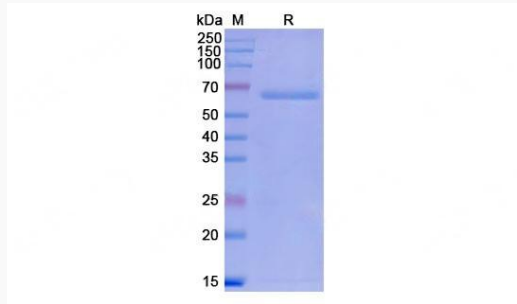
 Tel: 1-631-559-9269 1-516-512-3133

 Email: [info@creative-biomart.com](mailto:info@creative-biomart.com)  Fax: 1-631-938-8127

 45-1 Ramsey Road, Shirley, NY 11967, USA



**SDS-PAGE**



Tel: 1-631-559-9269 1-516-512-3133

Email: [info@creative-biomart.com](mailto:info@creative-biomart.com) Fax: 1-631-938-8127

45-1 Ramsey Road, Shirley, NY 11967, USA