

## Active Recombinant Full Length Human PRKAA1 / AMPK (A1/B2/G1) Protein, GST-tagged

Cat. No. PRKAA1-8419HF Lot. No. (See product label)

### SPECIFICATION

**Product Overview**

Full-length human AMPK $\alpha$ 1 [1-550(end) amino acids of accession number NP\_006242.4] was co-expressed as N-terminal GST-fusion protein (90 kDa) with GST-PRKAB2 [1-272(end) amino acids of accession number NP\_005390.1] and PRKAG1 [1-331(end) amino acids of accession number NP\_002724.1] using baculovirus expression system. GST-AMPK $\alpha$ 1/ $\beta$ 2/ $\gamma$ 1 was purified by using glutathione sepharose chromatography and activated with His-tagged CaMKK1. Activated GST-AMPK $\alpha$ 1/ $\beta$ 2/ $\gamma$ 1 was purified using glutathione sepharose chromatography.

**Species** Human

**Source** Sf21 Cells

**ProteinLength** 1-550(end)

**Form** 50 mM Tris-HCl, 150 mM NaCl, 0.05% Brij35, 1 mM DTT, 10% glycerol, pH7.5

**Bio-activity**

The activity was measured by off-chip mobility shift assay. The enzyme was incubated with fluorescence-labeled substrate and Mg(or Mn)/ATP. The phosphorylated and unphosphorylated substrates were separated and detected by LabChip™3000.

**Purity** 98%

 Tel: 1-631-559-9269 1-516-512-3133

 Email: [info@creative-biomart.com](mailto:info@creative-biomart.com)  Fax: 1-631-938-8127

 45-1 Ramsey Road, Shirley, NY 11967, USA

**Applications** SDS-PAGE

**Storage** Store at -80C. Avoid repeating freeze-thaws.

## GENE INFORMATION

**Gene Name** protein kinase, AMP-activated, alpha 1 catalytic subunit

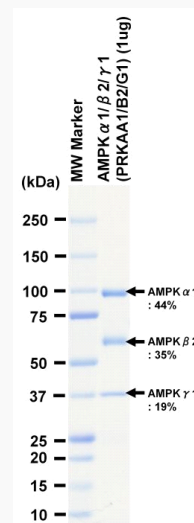
**Official Symbol** PRKAA1

**Synonyms** PRKAA1;AMPK;AMPKa1

**Protein Refseq** [NP\\_006242.4](#)

**UniProt ID** [Q13131](#)

## SDS-PAGE

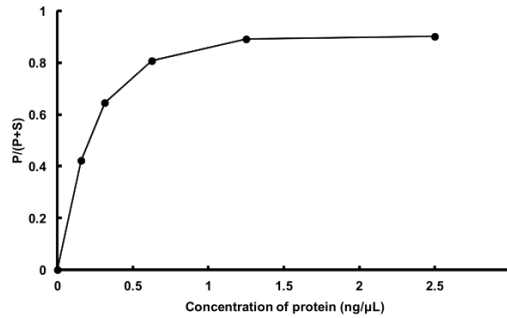


The purity was assessed by SDS-PAGE/CBB staining.

Tel: 1-631-559-9269 1-516-512-3133

Email: [info@creative-biomart.com](mailto:info@creative-biomart.com) Fax: 1-631-938-8127

45-1 Ramsey Road, Shirley, NY 11967, USA

**Activity data****Activity data**

The activity was measured by off-chip mobility shift assay. The enzyme was incubated with fluorescence-labeled substrate and Mg(or Mn)/ATP. The phosphorylated and unphosphorylated substrates were separated and detected by LabChip™3000.

 Tel: 1-631-559-9269 1-516-512-3133

 Email: [info@creative-biomart.com](mailto:info@creative-biomart.com)  Fax: 1-631-938-8127

 45-1 Ramsey Road, Shirley, NY 11967, USA