

## Recombinant Human PRKACA protein, GST-tagged

Cat. No. PRKACA-010H Lot. No. (See product label)

### SPECIFICATION

**Product Overview** Recombinant Human PRKACA protein, fused to GST-tagged, was expressed in Baculovirus.

**Species** Human

**Source** Insect Cells

**ProteinLength** 1-351aa

#### Description

This gene encodes one of the catalytic subunits of protein kinase A, which exists as a tetrameric holoenzyme with two regulatory subunits and two catalytic subunits, in its inactive form. cAMP causes the dissociation of the inactive holoenzyme into a dimer of regulatory subunits bound to four cAMP and two free monomeric catalytic subunits. Four different regulatory subunits and three catalytic subunits have been identified in humans. cAMP-dependent phosphorylation of proteins by protein kinase A is important to many cellular processes, including differentiation, proliferation, and apoptosis. Constitutive activation of this gene caused either by somatic mutations, or genomic duplications of regions that include this gene, have been associated with hyperplasias and adenomas of the adrenal cortex and are linked to corticotropin-independent Cushing's syndrome. Alternative splicing results in multiple transcript variants encoding different isoforms. Tissue-specific isoforms that differ at the N-terminus have been described, and these isoforms may differ in the post-translational modifications that occur at the N-terminus of some isoforms.

 Tel: 1-631-559-9269 1-516-512-3133

 Email: [info@creative-biomart.com](mailto:info@creative-biomart.com)  Fax: 1-631-938-8127

 45-1 Ramsey Road, Shirley, NY 11967, USA

<b>Form</b>	Liquid in. Phosphate-Buffered Saline (pH 7.4) containing 10% glycerol.
<b>Molecular Mass</b>	67 kDa (578aa)
<b>Endotoxin</b>	< 1 EU per 1ug of protein (determined by LAL method).
<b>Purity</b>	> 85%
<b>Applications</b>	SDS-PAGE
<b>Storage</b>	Can be stored at 2 centigrade to 8 centigrade for 1 week. For long term storage, aliquot and store at -20 centigrade to -80 centigrade. Avoid repeated freezing and thawing cycles.
<b>Concentration</b>	0.25mg/ml

## GENE INFORMATION

<b>Gene Name</b>	PRKACA protein kinase cAMP-activated catalytic subunit alpha [ Homo sapiens (human) ]
<b>Official Symbol</b>	PRKACA
<b>Synonyms</b>	cAMP-dependent protein kinase catalytic subunit alpha isoform Calpha1; PRKACA; PKACA; PPNAD4
<b>Gene ID</b>	5566
<b>mRNA Refseq</b>	NM_002730
<b>Protein Refseq</b>	NP_002721

 Tel: 1-631-559-9269 1-516-512-3133

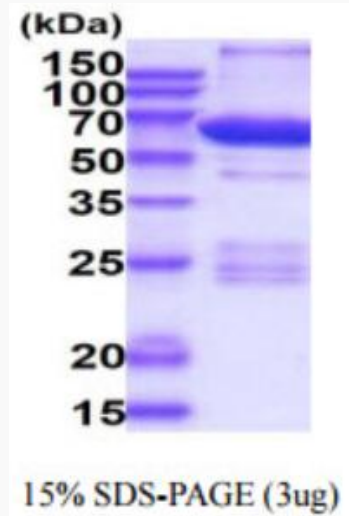
 Email: [info@creative-biomart.com](mailto:info@creative-biomart.com)  Fax: 1-631-938-8127

 45-1 Ramsey Road, Shirley, NY 11967, USA

**MIM** 601639

**UniProt ID** P17612

**15% SDS-PAGE  
(3ug)**



3ug by SDS-PAGE under reducing condition and visualized by coomassie blue stain.

 Tel: 1-631-559-9269 1-516-512-3133

 Email: [info@creative-biomart.com](mailto:info@creative-biomart.com)  Fax: 1-631-938-8127

 45-1 Ramsey Road, Shirley, NY 11967, USA