

Recombinant Human PRKAR2A Protein, His-tagged

Cat. No. PRKAR2A-81H Lot. No. (See product label)

SPECIFICATION

Product Overview	Recombinant human PRKAR2A protein (1-404aa), fused to His-tag at N-terminus, was expressed in E. coli and purified by using conventional chromatography techniques.
Species	Human
Source	E.coli
ProteinLength	1-404 a.a.
Description	<p>cAMP is a signaling molecule important for a variety of cellular functions. cAMP exerts its effects by activating the cAMP-dependent protein kinase, which transduces the signal through phosphorylation of different target proteins. The inactive kinase holoenzyme is a tetramer composed of two regulatory and two catalytic subunits. cAMP causes the dissociation of the inactive holoenzyme into a dimer of regulatory subunits bound to four cAMP and two free monomeric catalytic subunits. Four different regulatory subunits and three catalytic subunits have been identified in humans. The protein encoded by this gene is one of the regulatory subunits. This subunit can be phosphorylated by the activated catalytic subunit. It may interact with various A-kinase anchoring proteins and determine the subcellular localization of cAMP-dependent protein kinase. This subunit has been shown to regulate protein transport from endosomes to the Golgi apparatus and further to the endoplasmic reticulum (ER).</p>

 Tel: 1-631-559-9269 1-516-512-3133

 Email: info@creative-biomart.com  Fax: 1-631-938-8127

 45-1 Ramsey Road, Shirley, NY 11967, USA

Form	Liquid
Molecular Mass	48.6 kDa
AA Sequence	<p>MGSSHHHHHSSGLVPRGSHMGSMHIQIPPLTELLQGYTVEVLRQQPPDLVEFA VEYFTRLREARAPASVLPAAATPRQSLGHPPPEPGPDRVADAKGDSESEDEDELEVP VPSRFNRRVSVCAETYNPDEEEEDTDPRVIHPKTDEQRCRLQEACKDILLFKNLDQE QLSQVLDAMFERIVKADEHVIDQGDDGDNFYVIERGTYDILVTKDNQTRSVGQYDNR GSFGELALMYNTPRAATIVATSEGLWGLDRVTFRRIIVKNNAKKRKMFESFIESVPL LKSLEVSERMKIVDVIGEKIYKDGERIITQGEKADSFYIIESGEVSILIRSRTKSNKDGG NQEVEIARCHKGQYFGELALVTNKPRAASAYAVGDVKCLVMDVQAFERLLGPCMDI MKRNISHYEEQLVKMFGSSVDLGNLGG</p>
Purity	> 85% by SDS-PAGE
Applications	SDS-PAGE
Storage	Can be stored at +2 to +8 centigrade for 1 week. For long term storage, aliquot and store at -20 to -80 centigrade. Avoid repeated freezing and thawing cycles.
Concentration	0.5 mg/mL
Storage Buffer	Phosphate-Buffered Saline (pH 7.4) containing 10% glycerol, 1 mM DTT
GENE INFORMATION	
Gene Name	PRKAR2A protein kinase cAMP-dependent type II regulatory subunit alpha [Homo sapiens (human)]
Official Symbol	PRKAR2A

 Tel: 1-631-559-9269 1-516-512-3133

 Email: info@creative-biomart.com  Fax: 1-631-938-8127

 45-1 Ramsey Road, Shirley, NY 11967, USA

Synonyms PRKAR2A; protein kinase cAMP-dependent type II regulatory subunit alpha; PKR2; PRKAR2; cAMP-dependent protein kinase type II-alpha regulatory subunit; cAMP-dependent protein kinase regulatory subunit RII alpha; protein kinase A, RII-alpha subunit; protein kinase, cAMP-dependent, regulatory subunit type II alpha; EC 2.7.11.1

Gene ID [5576](#)

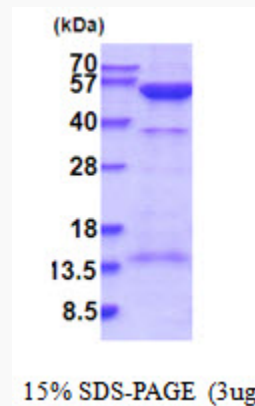
mRNA Refseq [NM_004157](#)

Protein Refseq [NP_004148](#)

MIM [176910](#)

UniProt ID [P13861](#)


SDS-PAGE



3 µg by SDS-PAGE under reducing condition and visualized by coomassie blue stain.

 Tel: 1-631-559-9269 1-516-512-3133

 Email: info@creative-biomart.com  Fax: 1-631-938-8127

 45-1 Ramsey Road, Shirley, NY 11967, USA