

Active Recombinant Full Length Human Protein Kinase C, Alpha, GST-tagged, Active

Cat. No. PRKCA-011H Lot. No. (See product label)

SPECIFICATION

Product Overview

Active recombinant N-terminal GST-tagged full length human PKC α protein (1-672) was expressed in insect cells.

Species

Human

Source

Insect Cells

ProteinLength

1-672 a.a.

Description

Protein kinase C (PKC) is a family of serine- and threonine-specific protein kinases that can be activated by calcium and the second messenger diacylglycerol. PKC family members phosphorylate a wide variety of protein targets and are known to be involved in diverse cellular signaling pathways. PKC family members also serve as major receptors for phorbol esters, a class of tumor promoters. Each member of the PKC family has a specific expression profile and is believed to play a distinct role in cells. The protein encoded by this gene is one of the PKC family members. This kinase has been reported to play roles in many different cellular processes, such as cell adhesion, cell transformation, cell cycle checkpoint, and cell volume control. Knockout studies in mice suggest that this kinase may be a fundamental regulator of cardiac contractility and Ca(2+) handling in myocytes.

Form

Lyophilized

Molecular Mass

102 kDa

 Tel: 1-631-559-9269 1-516-512-3133

 Email: info@creative-biomart.com  Fax: 1-631-938-8127

 45-1 Ramsey Road, Shirley, NY 11967, USA

Purity	≥80% as determined by SDS-PAGE
Unit Definition	One unit is defined as the amount of enzyme required to produce 1 pmol of ADP per minute at 30 centigrade in 0.1mM CaCl ₂ , 1 mg/mL phosphatidylserine, 0.02 mg/mL diacylglycerol, and 0.3% Triton X-100 using histone H1 (0.1 mg/mL) and 20μM ATP as substrates. Signal read after a 40 min reaction via luminescent detection.
Stability	≥ 2 years
Storage	At -80 centigrade.
Storage Buffer	Sterile 40 mM Tris-HCl, pH 8.0, with 110 mM sodium chloride, 2.2 mM potassium chloride, 0.04% Tween 20, 3 mM DTT, 20% glycerol, and 1.6 mM glutathione

GENE INFORMATION

Gene Name	PRKCA protein kinase C alpha [Homo sapiens (human)]
Official Symbol	PRKCA
Synonyms	PRKCA; protein kinase C alpha; AAG6; PKCA; PRKACA; PKCI+/-; PKCalpha; PKC-alpha; protein kinase C alpha type; PKC-A; aging-associated gene 6; EC 2.7.11.13
Gene ID	5578
mRNA Refseq	NM_002737
Protein Refseq	NP_002728
MIM	176960

 Tel: 1-631-559-9269 1-516-512-3133

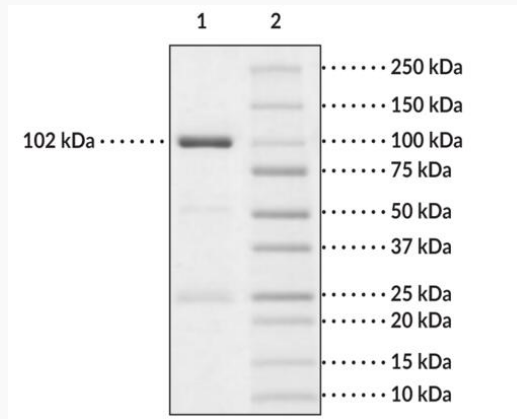
 Email: info@creative-biomart.com  Fax: 1-631-938-8127

 45-1 Ramsey Road, Shirley, NY 11967, USA

UniProt ID

P17252

**SDS-PAGE analysis
of PKC α**

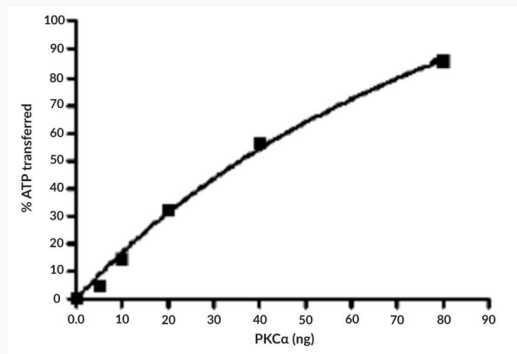


Lane 1: PKC α

Lane 2: MW Markers

This protein has a calculated molecular weight of 102 kDa

Specific Activity



Tel: 1-631-559-9269 1-516-512-3133

Email: info@creative-biomart.com Fax: 1-631-938-8127

45-1 Ramsey Road, Shirley, NY 11967, USA