

Active Recombinant Full Length Human PRKCA Protein, GST-tagged

Cat. No. PRKCA-3385HF **Lot. No.** (See product label)

SPECIFICATION

Product Overview	Full-length human PKC α [1-672(end) amino acids of accession number NP_002728.1] was expressed as N-terminal GST-fusion protein (104 kDa) using baculovirus expression system. GST-PKC α was purified by using glutathione sepharose chromatography.
Species	Human
Source	Sf21 Cells
ProteinLength	1-672(end)
Form	50 mM Tris-HCl, 150 mM NaCl, 0.2% Brij35, 1 mM DTT, 10% glycerol, pH7.5
Bio-activity	The activity was measured by off-chip mobility shift assay. The enzyme was incubated with fluorescence-labeled substrate, Mg(or Mn)/ATP, and Ca/Lipid Activator. The phosphorylated and unphosphorylated substrates were separated and detected by LabChip™3000.
Purity	96%
Applications	SDS-PAGE
Storage	Store at -80C. Avoid repeating freeze-thaws.

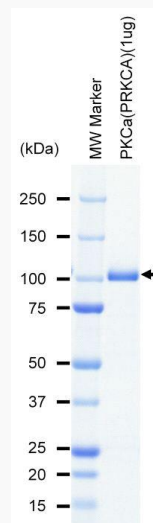
 Tel: 1-631-559-9269 1-516-512-3133

 Email: info@creative-biomart.com  Fax: 1-631-938-8127

 45-1 Ramsey Road, Shirley, NY 11967, USA

GENE INFORMATION

Gene Name	protein kinase C, alpha
Official Symbol	PRKCA
Synonyms	PRKCA;AAG6;PKC-alpha;PKCA;PKCI+/-;PKCalpha;PRKACA
Protein Refseq	NP_002728.1
UniProt ID	P17252

SDS-PAGE

The purity was assessed by SDS-PAGE/CBB staining.

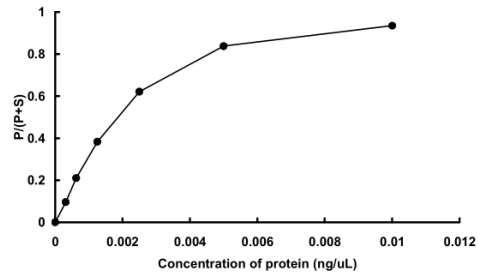
 Tel: 1-631-559-9269 1-516-512-3133

 Email: info@creative-biomart.com  Fax: 1-631-938-8127

 45-1 Ramsey Road, Shirley, NY 11967, USA

Activity data

Activity data



The activity was measured by off-chip mobility shift assay. The enzyme was incubated with fluorescence-labeled substrate, Mg(or Mn)/ATP, and Ca/Lipid Activator. The phosphorylated and unphosphorylated substrates were separated and detected by LabChip™3000.

Tel: 1-631-559-9269 1-516-512-3133

Email: info@creative-biomart.com Fax: 1-631-938-8127

45-1 Ramsey Road, Shirley, NY 11967, USA