

# Active Recombinant Full Length Human PRKCA Protein, DDK-tagged, Biotinylated

**Cat. No.** PRKCA-3962HF    **Lot. No.** (See product label)

## SPECIFICATION

<b>Product Overview</b>	Full-length human PKC $\alpha$ [1-672(end) amino acids of accession number NP_002728.1] was expressed as N-terminal DYKDDDDK tagged, biotinylated protein (80 kDa) using baculovirus expression system. The protein was purified by using DYKDDDDK tag antibody agarose.
<b>Species</b>	Human
<b>Source</b>	Sf21 Cells
<b>ProteinLength</b>	1-672 a.a.
<b>Form</b>	50 mM Tris-HCl, 150 mM NaCl, 0.05% Brij35, 1 mM DTT, 10% glycerol, pH7.5
<b>Bio-activity</b>	The activity was measured by off-chip mobility shift assay(MSA). The enzyme was incubated with fluorescence-labeled substrate and Mg(or Mn)/ATP. The phosphorylated and unphosphorylated substrates were separated and detected by MSA device.
<b>Purity</b>	88%
<b>Applications</b>	SDS-PAGE
<b>Storage</b>	Store at -80C. Avoid repeating freeze-thaws.

 Tel: 1-631-559-9269    1-516-512-3133

 Email: [info@creative-biomart.com](mailto:info@creative-biomart.com)     Fax: 1-631-938-8127

 45-1 Ramsey Road, Shirley, NY 11967, USA

**Conjugation**                      Biotin

## GENE INFORMATION

**Gene Name**                      protein kinase C, alpha

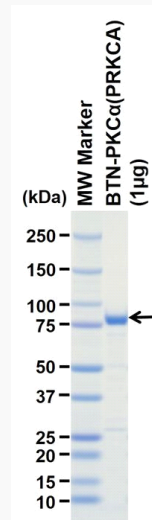
**Official Symbol**                PRKCA

**Synonyms**                      PRKCA;AAG6;PKC-alpha;PKCA;PKCI+/-;PKCalpha;PRKACA

**Protein Refseq**                [NP\\_002728.1](#)

**UniProt ID**                      [P17252](#)

## SDS-PAGE

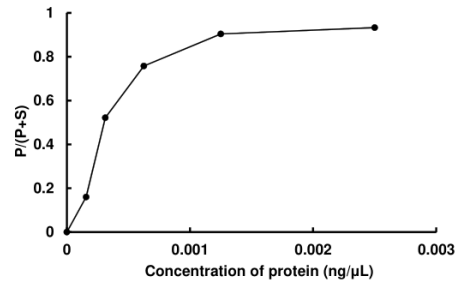


The purity was assessed by SDS-PAGE/CBB staining.

 Tel: 1-631-559-9269    1-516-512-3133

 Email: [info@creative-biomart.com](mailto:info@creative-biomart.com)     Fax: 1-631-938-8127

 45-1 Ramsey Road, Shirley, NY 11967, USA

**Activity data****Activity data**

The activity was measured by off-chip mobility shift assay(MSA). The enzyme was incubated with fluorescence-labeled substrate and Mg(or Mn)/ATP. The phosphorylated and unphosphorylated substrates were separated and detected by MSA device.

 Tel: 1-631-559-9269 1-516-512-3133

 Email: [info@creative-biomart.com](mailto:info@creative-biomart.com)  Fax: 1-631-938-8127

 45-1 Ramsey Road, Shirley, NY 11967, USA