

Recombinant Human Protein Kinase C, Alpha

Cat. No. PRKCA-648H **Lot. No.** (See product label)

SPECIFICATION

Product Overview	Recombinant Human PRKCA is produced in <i>Baculoviral insect expression system</i> .
Species	Human
Source	Insect Cells
Description	<p>MP is a signaling molecule important for a variety of cellular functions. cAMP exerts its effects by activating the AMP-activated protein kinase (AMPK), which transduces the signal through phosphorylation of different target proteins. The inactive holoenzyme of AMPK is a tetramer composed of two regulatory and two catalytic subunits. cAMP causes the dissociation of the inactive holoenzyme into a dimer of regulatory subunits bound to four cAMP and two free monomeric catalytic subunits. Four different regulatory subunits and three catalytic subunits of AMPK have been identified in humans. The protein encoded by this gene is a member of the Ser/Thr protein kinase family and is a catalytic subunit of AMPK. Alternatively spliced transcript variants encoding distinct isoforms have been observed.</p>
Format	Purified, Liquid.
Concentration	20ug/ml.
Buffer	Suspended in SDS/mercaptoethanol sample buffer with a bromophenol blue dye marker.
Applications	Suitable for use as a standard in Western blot using enhanced chemiluminescence.

 Tel: 1-631-559-9269 1-516-512-3133

 Email: info@creative-biomart.com  Fax: 1-631-938-8127

 45-1 Ramsey Road, Shirley, NY 11967, USA

Load 2-5ul directly from vial (no dilution necessary). For blots using less sensitive substrates, such as alkaline phosphatase, larger amount of protein should be loaded onto the gel. Each laboratory should determine an optimum working titer for use in its particular application. Other applications have not been tested but use in such assays should not necessarily be excluded.

Inactivation Not applicable.

Important Note Centrifuge before opening to ensure complete recovery of vial contents.

Storage Short term (up to 1 year) store at -20°C. Long term, store at -70°C.

GENE INFORMATION

Gene Name [PRKCA protein kinase C, alpha \[Homo sapiens \]](#)

Synonyms PRKCA; protein kinase C, alpha; AAG6; PKCA; PRKACA; MGC129900; MGC129901; PKC-alpha; EC 2.7.11. 13; Protein kinase C alpha type; aging-associated gene 6; protein kinase C alpha type

Gene ID [5578](#)

mRNA Refseq [NM_002737](#)

Protein Refseq [NP_002728](#)

MIM [176960](#)

UniProt ID [P17252](#)

Chromosome 17q22-q24

 Tel: 1-631-559-9269 1-516-512-3133

 Email: info@creative-biomart.com  Fax: 1-631-938-8127

 45-1 Ramsey Road, Shirley, NY 11967, USA

Location

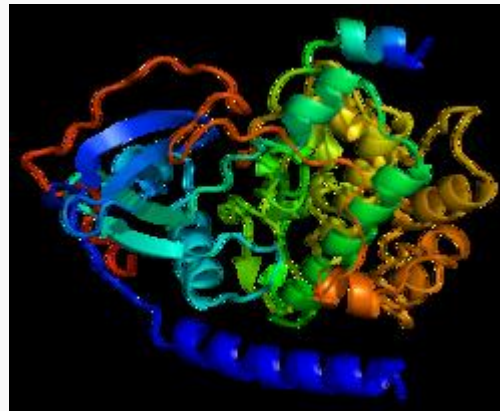
Pathway

Calcium signaling pathway; ErbB signaling pathway; Fc epsilon RI signaling pathway; Fc gamma R-mediated phagocytosis; Focal adhesion; Glioma; GnRH signaling pathway; Leukocyte transendothelial migration; Long-term potentiation; Long-term depression; MAPK signaling pathway; Melanogenesis; Natural killer cell mediated cytotoxicity; Non-small cell lung cancer; Pathogenic Escherichia coli infection - EHEC; Pathways in cancer; Phosphatidylinositol signaling system; Tight junction; VEGF signaling pathway; Vascular smooth muscle contraction; Vibrio cholerae infection; Wnt signaling pathway; Diabetes pathways; Hemostasis; Synaptic Transmission

Function

ATP binding; calcium ion binding; calcium-dependent protein kinase C activity; nucleotide binding; protein binding; transferase activity; zinc ion binding

PDB rendering based on 1apm.



 Tel: 1-631-559-9269 1-516-512-3133

 Email: info@creative-biomart.com  Fax: 1-631-938-8127

 45-1 Ramsey Road, Shirley, NY 11967, USA