

# Recombinant Full Length Human PRKCB Protein, C-Flag-tagged

Cat. No. PRKCB-1750HFL Lot. No. (See product label)

## SPECIFICATION

<b>Product Overview</b>	Recombinant Full Length Human PRKCB Protein, fused to Flag-tag at C-terminus, was expressed in Mammalian cells.
<b>Species</b>	Human
<b>Source</b>	Mammalian Cells
<b>Description</b>	<p>Protein kinase C (PKC) is a family of serine- and threonine-specific protein kinases that can be activated by calcium and second messenger diacylglycerol. PKC family members phosphorylate a wide variety of protein targets and are known to be involved in diverse cellular signaling pathways. PKC family members also serve as major receptors for phorbol esters, a class of tumor promoters. Each member of the PKC family has a specific expression profile and is believed to play a distinct role in cells. The protein encoded by this gene is one of the PKC family members. This protein kinase has been reported to be involved in many different cellular functions, such as B cell activation, apoptosis induction, endothelial cell proliferation, and intestinal sugar absorption. Studies in mice also suggest that this kinase may also regulate neuronal functions and correlate fear-induced conflict behavior after stress. Alternatively spliced transcript variants encoding distinct isoforms have been reported.</p>
<b>Form</b>	25 mM Tris HCl, pH 7.3, 100 mM glycine, 10% glycerol.

 Tel: 1-631-559-9269 1-516-512-3133

 Email: [info@creative-biomart.com](mailto:info@creative-biomart.com)  Fax: 1-631-938-8127

 45-1 Ramsey Road, Shirley, NY 11967, USA

<b>Molecular Mass</b>	76.8 kDa
<b>AA Sequence</b>	<p>MADPAAGPPPSEGEESTVRFARKGALRQKNVHEVKNHKFTARFFKQPTFCSHCTD          FIWGFQKQGFQCQVC CFVVHKRCHEFVTFCSPGADKGPASDDPRSKHKFKIHTYS          SPTFCDHCGSLLYGLIHQGMKCDTCMMNVH KRCVMNVPSLCGTDHTERRGRIYIQ          AHIDRDVLIVLVRDAKNLVPMDPNGLSDPYVKLKLIPDPKSESKQ KTKTIKCSLNPEW          NETFRFQLKESDKDRRLSVEIWDWDLTSRNDFMGSLSFGISSELQKASVDGWFKLLS          Q EEGEYFNVPVPPEGSEANEELRQKFERAKISQGTKVPEEKTTNTVSKFDNNGNR          DRMKLTDFNFLMVLGK GSFQKVMLSERKGTDELYAVKILKKDVVIQDDDVECTMVE          KRVLALPGKPPFLTQLHSCFQTMDRLYFVM EYVNGGDLMYHIQQVGRFKEPHAVF          YAAEIAIGLFFLQSKGIIYRDLKLDNVMLDSEGHIKIADFGMCKE NIWDGVTTKTFCGT          PDYIAPEIIAYQPYGKSVDWWAFGVLLYEMLAGQAPFEGEDEDELFSIMEHNVAY          PKSMSKEAVAICKGLMTKHPGKRLGCGPEGERDIKEHAFFRYIDWEKLERKEIQPPY          KPKACGRNAENFD          RFFTRHPPVLTTPDQEVIRNIDQSEFEGFSFVNSEFLKPEVKSTRTRPLEQKLISEED          LAANDILDYKDDDDKV</p>
<b>Purity</b>	> 80% as determined by SDS-PAGE and Coomassie blue staining.
<b>Stability</b>	Stable for 12 months from the date of receipt of the product under proper storage and handling conditions. Avoid repeated freeze-thaw cycles.
<b>Storage</b>	Store at -80 centigrade.
<b>Concentration</b>	>50 ug/mL as determined by microplate BCA method.
<b>Preparation</b>	Recombinant protein was captured through anti-DDK affinity column followed by conventional chromatography steps.
<b>Protein Families</b>	Druggable Genome, Protein Kinase

 Tel: 1-631-559-9269 1-516-512-3133

 Email: [info@creative-biomart.com](mailto:info@creative-biomart.com)  Fax: 1-631-938-8127

 45-1 Ramsey Road, Shirley, NY 11967, USA

**Protein Pathways**

B cell receptor signaling pathway, Calcium signaling pathway, Chemokine signaling pathway, ErbB signaling pathway, Fc epsilon RI signaling pathway, Fc gamma R-mediated phagocytosis, Focal adhesion, Gap junction, Glioma, GnRH signaling pathway, Leukocyte transendothelial migration, Long-term depression, Long-term potentiation, MAPK signaling pathway, Melanogenesis, Natural killer cell mediated cytotoxicity, Non-small cell lung cancer, Pathways in cancer, Phosphatidylinositol signaling system, Tight junction, Vascular smooth muscle contraction, VEGF signaling pathway, Vibrio cholerae infection, Wnt signaling pathway

**Full Length**

Full L.

## GENE INFORMATION

**Gene Name**

PRKCB protein kinase C beta [ Homo sapiens (human) ]

**Official Symbol**

PRKCB

**Synonyms**

PKCB; PRKCB1; PRKCB2; PKCI(2); PKCbeta; PKC-beta

**Gene ID**

5579

**mRNA Refseq**

NM\_002738.7

**Protein Refseq**

NP\_002729.2

**MIM**

176970

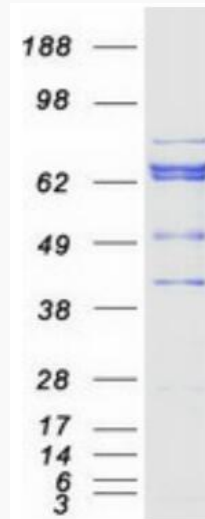
**UniProt ID**

P05771

 Tel: 1-631-559-9269 1-516-512-3133

 Email: [info@creative-biomart.com](mailto:info@creative-biomart.com)  Fax: 1-631-938-8127

 45-1 Ramsey Road, Shirley, NY 11967, USA



Coomassie blue staining of purified PRKCB protein.

 Tel: 1-631-559-9269 1-516-512-3133

 Email: [info@creative-biomart.com](mailto:info@creative-biomart.com)  Fax: 1-631-938-8127

 45-1 Ramsey Road, Shirley, NY 11967, USA