

# Recombinant Human PRKCB Protein, MYC/DDK-tagged, C13 and N15-labeled

**Cat. No.** PRKCB-328H    **Lot. No.** (See product label)

## SPECIFICATION

### Product Overview

PRKCB MS Standard C13 and N15-labeled recombinant protein (NP\_997700) with a C-terminal MYC/DDK tag, was expressed in HEK293 cells.

### Species

Human

### Source

HEK293

### Description

Protein kinase C (PKC) is a family of serine- and threonine-specific protein kinases that can be activated by calcium and second messenger diacylglycerol. PKC family members phosphorylate a wide variety of protein targets and are known to be involved in diverse cellular signaling pathways. PKC family members also serve as major receptors for phorbol esters, a class of tumor promoters. Each member of the PKC family has a specific expression profile and is believed to play a distinct role in cells. The protein encoded by this gene is one of the PKC family members. This protein kinase has been reported to be involved in many different cellular functions, such as B cell activation, apoptosis induction, endothelial cell proliferation, and intestinal sugar absorption. Studies in mice also suggest that this kinase may also regulate neuronal functions and correlate fear-induced conflict behavior after stress. Alternatively spliced transcript variants encoding distinct isoforms have been reported. [provided by RefSeq, Jul 2008]

### Molecular Mass

76.7 kDa

 Tel: 1-631-559-9269    1-516-512-3133

 Email: [info@creative-biomart.com](mailto:info@creative-biomart.com)     Fax: 1-631-938-8127

 45-1 Ramsey Road, Shirley, NY 11967, USA

**AA Sequence**

MADPAAGPPPSEGEESTVRFARKGALRQKNVHEVKNHKFTARFFKQPTFCSHCTD  
 FIWFGFKQGFQCQVCCFVVHKRCHEFVTFSCPGADKGPASDDPRSKHKFKIHTYSS  
 PTFCDHCGSLLYGLIHQGMKCDTCMMNVHKRCVMNVPSLCGTDHTERRGRIYIQA  
 IDRDLVILVLRDAKNLVPMDPNGLSDPYVKLKLIPDPKSESKQKTKTIKCSLNPEWNE  
 TFRFQLKESDKDRRLSVEIWDWDLTSRNDFMGSLSGISELQKASVDGWFKLLSQE  
 EGEYFNVPVPEEGSEANEELRQKFERAKISQGTKVPEEKTNTVSKFDNNGNRDRM  
 KLTDNFNLMVLGKGSFGKVMLSERKGTDELYAVKILKGDVVIQDDDDVECTMVEKRVL  
 ALPGKPPFLTQLHSCFQTMDRLYFVMEYVNGGDLMYHIQQVGRFKEPHAVFYAAEI  
 AIGLFFLQSKGIYRDLKLDNVMLDSEGHIAIDFGMCKENIWDGVTTKTFCGTPDYIA  
 PEIIAYQPYGKSVDWWAFGVLLYEMLAGQAPFEGEDEDELQFSIMEHNVAYPKSMS  
 KEAVAICKGLMTKHPGKRLGCGPEGERDIKEHAFFRYIDWEKLERKEIQPPYKPKAR  
 DKRDTSNFDKEFTRQPVELTPTDKLFIMNLDQNEFAGFSYTNPEFVINVTRTRPLEQ  
 KLISEEDLAANDILDYKDDDDKV

**Purity**

> 80% as determined by SDS-PAGE and Coomassie blue staining

**Stability**

Stable for 3 months from receipt of products under proper storage and handling conditions.

**Storage**

Store at -80 centigrade. Avoid repeated freeze-thaw cycles.

**Concentration**

50 µg/mL as determined by BCA

**Storage Buffer**

100 mM glycine, 25 mM Tris-HCl, pH 7.3.

## GENE INFORMATION

**Gene Name**

PRKCB protein kinase C, beta [ Homo sapiens (human) ]

**Official Symbol**

PRKCB

 Tel: 1-631-559-9269 1-516-512-3133

 Email: [info@creative-biomart.com](mailto:info@creative-biomart.com)  Fax: 1-631-938-8127

 45-1 Ramsey Road, Shirley, NY 11967, USA

**Synonyms** PRKCB; protein kinase C, beta; PKCB, PRKCB1, PRKCB2, protein kinase C, beta 1; protein kinase C beta type; PKC-B; protein kinase C, beta 1 polypeptide; PKCB; PRKCB1; PRKCB2; PKC-beta; MGC41878;

**Gene ID** [5579](#)

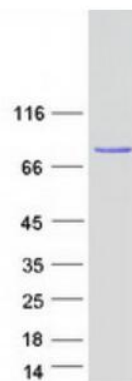
**mRNA Refseq** [NM\\_212535](#)

**Protein Refseq** [NP\\_997700](#)

**MIM** [176970](#)

**UniProt ID** [P05771](#)

**SDS-PAGE**



 Tel: 1-631-559-9269 1-516-512-3133

 Email: [info@creative-biomart.com](mailto:info@creative-biomart.com)  Fax: 1-631-938-8127

 45-1 Ramsey Road, Shirley, NY 11967, USA