

Recombinant Human PRKCB Protein, Myc/DDK-tagged, C13 and N15-labeled

Cat. No. PRKCB-5779H Lot. No. (See product label)

SPECIFICATION

Product Overview

PRKCB MS Standard C13 and N15-labeled recombinant protein (NP_002729) with a C-terminal MYC/DDK tag, was expressed in HEK293 cells.

Species

Human

Source

HEK293

Description

Protein kinase C (PKC) is a family of serine- and threonine-specific protein kinases that can be activated by calcium and second messenger diacylglycerol. PKC family members phosphorylate a wide variety of protein targets and are known to be involved in diverse cellular signaling pathways. PKC family members also serve as major receptors for phorbol esters, a class of tumor promoters. Each member of the PKC family has a specific expression profile and is believed to play a distinct role in cells. The protein encoded by this gene is one of the PKC family members. This protein kinase has been reported to be involved in many different cellular functions, such as B cell activation, apoptosis induction, endothelial cell proliferation, and intestinal sugar absorption. Studies in mice also suggest that this kinase may also regulate neuronal functions and correlate fear-induced conflict behavior after stress. Alternatively spliced transcript variants encoding distinct isoforms have been reported.

Molecular Mass

77 kDa

 Tel: 1-631-559-9269 1-516-512-3133

 Email: info@creative-biomart.com  Fax: 1-631-938-8127

 45-1 Ramsey Road, Shirley, NY 11967, USA

AA Sequence

MADPAAGPPPSEGEESTVRFARKGALRQKNVHEVKNHKFTARFFKQPTFCSHCTD
 FIWFGFKQGFQCQVCCFVVHKRCHEFVTFSCPGADKGPASDDPRSKHKFKIHTYSS
 PTFCDHCGSLLYGLIHQGMKCDTCMMNVHKRCVMNVPSLCGTDHTERRGRIYIAH
 IDRDLVILVLRDAKNLVPMDPNGLSDPYVKLKLIPDPKSESKQKTKTIKCSLNPEWNE
 TFRFQLKESDKDRRLSVEIWDWDLTSRNDFMGSLSFGISSELQKASVDGWFKLLSQE
 EGEYFNVPVPEEGSEANEELRQKFERAKISQGTKVPEEKTNTNTVSKFDNNGNRDRM
 KLTDNFNLMVLGKGSFGKVMLSERKGTDELYAVKILKDDVVIQDDDVECTMVEKRVL
 ALPGKPPFLTQLHSCFQTMDRLYFVMEYVNGGDLMYHIQQVGRFKEPHAVFYAAEI
 AIGLFFLQSKGIYRDLKLDNVMLDSEGHIAIDFGMCKENIWDGVTTKTFCGTPDYIA
 PEIIAYQPYGKSVDWWAFGVLLYEMLAGQAPFEGEDEDELQFSIMEHNVAYPKSMS
 KEAVAICKGLMTKHPGKRLGCGPEGERDIKEHAFFRYIDWEKLERKEIQPPYKPKAC
 GRNAENFDRFFTRHPPVLTTPDQEVIRNIDQSEFEGFSFVNSEFLKPEVKSTRTRPL
 EQKLISEEDLAANDILDYKDDDDKV

Purity

> 80% as determined by SDS-PAGE and Coomassie blue staining

Stability

Stable for 3 months from receipt of products under proper storage and handling conditions.

Storage

Store at -80 centigrade. Avoid repeated freeze-thaw cycles.

Concentration

50 µg/mL as determined by BCA

Storage Buffer

100 mM glycine, 25 mM Tris-HCl, pH 7.3.

GENE INFORMATION
Gene Name

PRKCB protein kinase C beta [Homo sapiens (human)]

Official Symbol

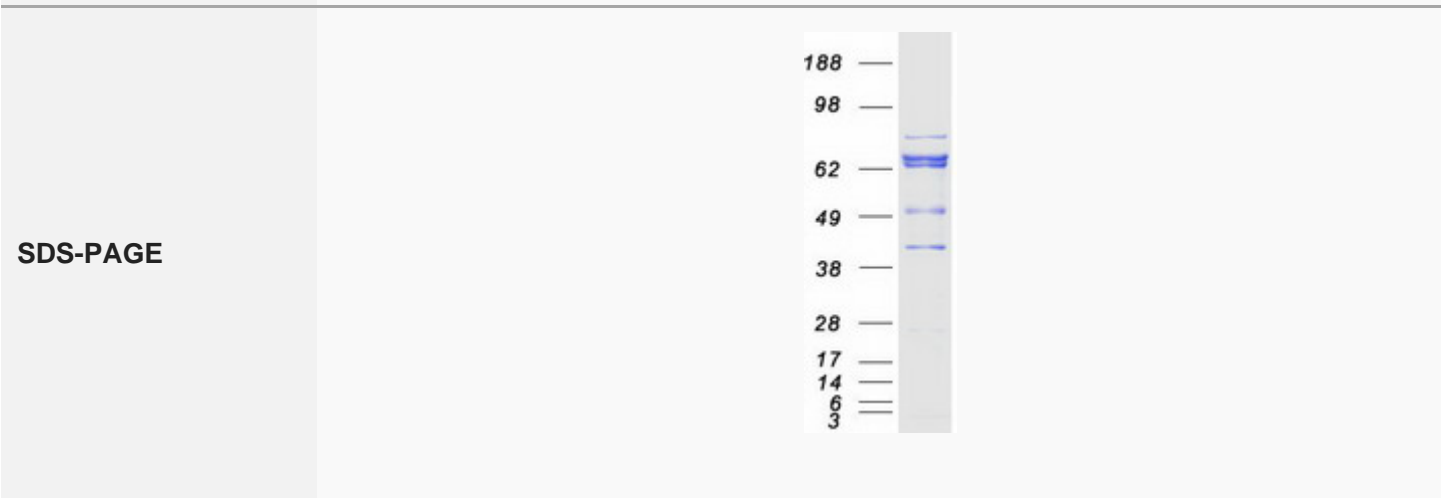
PRKCB

 Tel: 1-631-559-9269 1-516-512-3133

 Email: info@creative-biomart.com  Fax: 1-631-938-8127

 45-1 Ramsey Road, Shirley, NY 11967, USA

Synonyms	PRKCB; protein kinase C, beta; PKCB, PRKCB1, PRKCB2, protein kinase C, beta 1; protein kinase C beta type; PKC-B; protein kinase C, beta 1 polypeptide; PKCB; PRKCB1; PRKCB2; PKC-beta; MGC41878;
Gene ID	5579
mRNA Refseq	NM_002738
Protein Refseq	NP_002729
MIM	176970
UniProt ID	P05771



Tel: 1-631-559-9269 1-516-512-3133

Email: info@creative-biomart.com Fax: 1-631-938-8127

45-1 Ramsey Road, Shirley, NY 11967, USA