

Recombinant Full Length Human PRKCE Protein, C-Flag-tagged

Cat. No. PRKCE-728HFL Lot. No. (See product label)

SPECIFICATION

Product Overview

Recombinant Full Length Human PRKCE Protein, fused to Flag-tag at C-terminus, was expressed in Mammalian cells.

Species

Human

Source

Mammalian Cells

Description

Protein kinase C (PKC) is a family of serine- and threonine-specific protein kinases that can be activated by calcium and the second messenger diacylglycerol. PKC family members phosphorylate a wide variety of protein targets and are known to be involved in diverse cellular signaling pathways. PKC family members also serve as major receptors for phorbol esters, a class of tumor promoters. Each member of the PKC family has a specific expression profile and is believed to play a distinct role in cells. The protein encoded by this gene is one of the PKC family members. This kinase has been shown to be involved in many different cellular functions, such as neuron channel activation, apoptosis, cardioprotection from ischemia, heat shock response, as well as insulin exocytosis. Knockout studies in mice suggest that this kinase is important for lipopolysaccharide (LPS)-mediated signaling in activated macrophages and may also play a role in controlling anxiety-like behavior.

Form


25 mM Tris HCl, pH 7.3, 100 mM glycine, 10% glycerol.

Molecular Mass

83.5 kDa

 Tel: 1-631-559-9269 1-516-512-3133

 Email: info@creative-biomart.com  Fax: 1-631-938-8127

 45-1 Ramsey Road, Shirley, NY 11967, USA

AA Sequence

MVVFNGLLKIKICEAVSLKPTAWSLRHAVGPRPQTFLDPYIALNVDDSRIGQTATKQ
 KTNPAWHDEFV TDVCNGRKIELAVFHDAPIGYDDFVANCTIQFEELLQNGSRHFE
 DWIDLEPEGRVYVIIDLSGSSGEAPK DNEERVFRERMRPRKRQGAVRRRVHQVNG
 HKFMATYLRQPTYCShCRDFIWGVIGKQGYQCQVCTCVVHK RCHELIITKCAGLKK
 QETPDQVGSQRFSVNMPHKFGIHNYKVPTFCDHCGSLLWGLLRQGLQCKVCKMNV
 HRR CETNVAPNCGVDARGIAKVLADLGVTDPKITNSGQRRKLIAGAESPQPASGSS
 PSEEDRSKSAPTS PCDQEIKELENNIRKALSFDNRGEEHRAASSPDGQLMSPGENG
 EVRQGQAKRLGLDEFNFIVLKGKGSFG KVMLAELKGKDEVYAVKVLKKDVLQDDD
 VDCTMTEKRILALARKHPYLTQLYCCFQTKDRLFFVMEYVN GGDLMFQIQRSRKFD
 EPRSRFYAAEVTSALMFLHQHGVIYRDLKLDNILLDAEGHCKLADFGMCKEGILN GV
 TTTTFCGTPDYIAPEILQELEYGPSVDWWALGVLMYEMMAGQPPFEADNEDDLFESI
 LHDDVLYPVWL SKEAVSILKAFMTKNPHKRLGCVASQNGEDAIAKQHPFFKEIDWVLL
 EQKKIKPPFKPRIKTKRDVNNFDQ
 DFTREEPVLTLVDEAIVKQINQEEFKGFSYFGEDLMPTRTRPLEQKLISEEDLAANDIL
 DYKDDDDKV

Purity

> 80% as determined by SDS-PAGE and Coomassie blue staining.

Stability

Stable for 12 months from the date of receipt of the product under proper storage and handling conditions. Avoid repeated freeze-thaw cycles.

Storage

Store at -80 centigrade.

Concentration

>50 ug/mL as determined by microplate BCA method.

Preparation

Recombinant protein was captured through anti-DDK affinity column followed by conventional chromatography steps.

Protein Families

Druggable Genome, Protein Kinase

 Tel: 1-631-559-9269 1-516-512-3133

 Email: info@creative-biomart.com  Fax: 1-631-938-8127

 45-1 Ramsey Road, Shirley, NY 11967, USA

Protein Pathways	Fc epsilon RI signaling pathway, Fc gamma R-mediated phagocytosis, Tight junction, Type II diabetes mellitus, Vascular smooth muscle contraction
-------------------------	--

Full Length	Full L.
--------------------	---------

GENE INFORMATION

Gene Name	PRKCE protein kinase C epsilon [Homo sapiens (human)]
------------------	---

Official Symbol	PRKCE
------------------------	-------

Synonyms	PKCE; nPKC-epsilon
-----------------	--------------------

Gene ID	5581
----------------	------

mRNA Refseq	NM_005400.3
--------------------	-------------

Protein Refseq	NP_005391.1
-----------------------	-------------

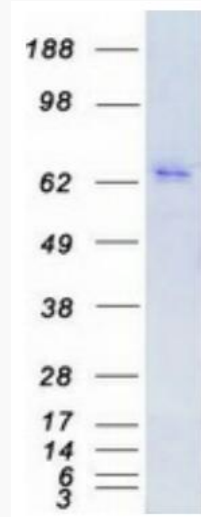
MIM	176975
------------	--------

UniProt ID	Q02156
-------------------	--------

 Tel: 1-631-559-9269 1-516-512-3133

 Email: info@creative-biomart.com  Fax: 1-631-938-8127

 45-1 Ramsey Road, Shirley, NY 11967, USA



Coomassie blue staining of purified PRKCE protein.

 Tel: 1-631-559-9269 1-516-512-3133

 Email: info@creative-biomart.com  Fax: 1-631-938-8127

 45-1 Ramsey Road, Shirley, NY 11967, USA