

# Active Recombinant Full Length Human PRKCH Protein, GST-tagged

Cat. No. PRKCH-1571HF Lot. No. (See product label)

## SPECIFICATION

|                         |  |
|-------------------------|--|
| <b>Product Overview</b> | Full-length human PKC $\eta$ [1-683(end) amino acids of accession number NP_006246.2] was expressed as N-terminal GST-fusion protein (105 kDa) using baculovirus expression system. GST-PKC $\eta$ was purified by using glutathione sepharose chromatography.   |
| <b>Species</b>          | Human  |
| <b>Source</b>           | Sf21 Cells   |
| <b>ProteinLength</b>    | 1-683(end)   |
| <b>Form</b>             | 50 mM Tris-HCl, 150 mM NaCl, 0.05% Brij35, 1 mM DTT, 10% glycerol, pH7.5   |
| <b>Bio-activity</b>     | The activity was measured by off-chip mobility shift assay(MSA). The enzyme was incubated with fluorescence-labeled substrate, Mg(or Mn)/ATP, and Lipid Activator. The phosphorylated and unphosphorylated substrates were separated and detected by MSA device. |
| <b>Purity</b>           | 90%  |
| <b>Applications</b>     | SDS-PAGE   |
| <b>Storage</b>          | Store at -80C. Avoid repeating freeze-thaws.   |

 Tel: 1-631-559-9269 1-516-512-3133

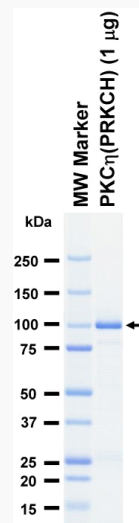
 Email: [info@creative-biomart.com](mailto:info@creative-biomart.com)  Fax: 1-631-938-8127

 45-1 Ramsey Road, Shirley, NY 11967, USA

## GENE INFORMATION

|                        |                                 |
|------------------------|---------------------------------|
| <b>Gene Name</b>       | protein kinase C, eta           |
| <b>Official Symbol</b> | PRKCH                           |
| <b>Synonyms</b>        | PRKCH;PKC-L;PKCL;PRKCL;nPKC-eta |
| <b>Protein Refseq</b>  | <a href="#">NP_006246.2</a>     |
| <b>UniProt ID</b>      | <a href="#">P24723</a>          |

## SDS-PAGE

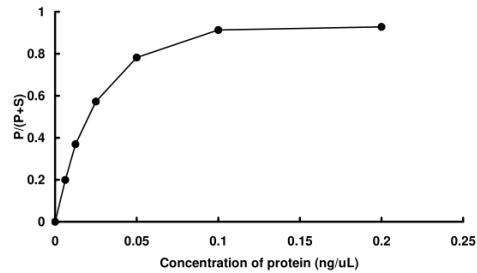


The purity was assessed by SDS-PAGE/CBB staining.

Tel: 1-631-559-9269 1-516-512-3133

Email: [info@creative-biomart.com](mailto:info@creative-biomart.com) Fax: 1-631-938-8127

45-1 Ramsey Road, Shirley, NY 11967, USA

**Activity data****Activity data**

The activity was measured by off-chip mobility shift assay(MSA). The enzyme was incubated with fluorescence-labeled substrate, Mg(or Mn)/ATP, and Lipid Activator. The phosphorylated and unphosphorylated substrates were separated and detected by MSA device.

 Tel: 1-631-559-9269 1-516-512-3133

 Email: [info@creative-biomart.com](mailto:info@creative-biomart.com)  Fax: 1-631-938-8127

 45-1 Ramsey Road, Shirley, NY 11967, USA