

Recombinant Human PRKCH protein, His-tagged

Cat. No. PRKCH-4532H Lot. No. (See product label)

SPECIFICATION

Product Overview	Recombinant Human PRKCH protein(P24723)(1-683aa), fused with C-terminal His tag, was expressed in E.coli.
Species	Human
Source	E.coli
ProteinLength	1-683a.a.
Tag	His
Form	If the delivery form is liquid, the default storage buffer is Tris/PBS-based buffer, 5%-50% glycerol. If the delivery form is lyophilized powder, the buffer before lyophilization is Tris/PBS-based buffer, 6% Trehalose, pH 8.0.
Molecular Mass	84.7 kDa
Purity	Greater than 90% as determined by SDS-PAGE.
Storage	Store at -20°C/-80°C upon receipt, aliquoting is necessary for mutiple use. Avoid repeated freeze-thaw cycles.
Reconstitution	We recommend that this vial be briefly centrifuged prior to opening to bring the contents to the bottom. Please reconstitute protein in deionized sterile water to a concentration of 0.1-1.0 mg/mL.We recommend to add 5-50% of glycerol (final

 Tel: 1-631-559-9269 1-516-512-3133

 Email: info@creative-biomart.com  Fax: 1-631-938-8127

 45-1 Ramsey Road, Shirley, NY 11967, USA

concentration) and aliquot for long-term storage at -20°C/-80°C.

AA Sequence

MSSGTMKFNGYLRVRIGEAVGLQPTRWLSLRHSLFKKGHQLLDPYLTVSVDQVRVG
 QTSTKQKTNKPTYNEEFCANVTDGGHLELAVFHETPLGYDHFVANCTLQFQELLRT
 TGASDTFEGWVDLEPEGKVFVVITLTGSFTEATLQRDRIFKHFRKRQRAMRRRVH
 QINGHKFMATYLRQPTYCSHCREFIWGVFGKQGYQCQVCTCVVHKRCHHLIVTACT
 CQNNINKVDSKIAEQRFGINIPHKFSIHNYKVPTFCDHCGSLLWGIMRQGLQCKICKM
 NVHIRCQANVAPNCGVNAVELAKTLAGMGLQPGNISPTSKLVSRSTLRRQGKESSK
 EGNIGVNSSNRLGIDNFEFIRVLGKGSFGKVMLARVKETGDLYAVKVLKKDVLQD
 DDVECTMTEKRILSLARNHPFLTQLFCCFQTPDRLFFVMEFVNGGDLMFHIQKSRRF
 DEARARFYAAEIISALMFLHDKGIYRDLKLDNVLLDHEGHCKLADFGMCKEGICNGV
 TTATFCGTPDYIAPEILQEMLYGPAVDWWAMGVLLYEMLCGHAPFEAENEDDLFEAI
 LNDEVVYPTWLHEDATGILKSFMTKNPTMRLGSLTQGGEHAILRHPFFKEIDWAQLN
 HRQIEPPFRPRIKSREDVSNFDPDFIKEEPVLTPIDEGHLPMINQDEFNRNFSYVSP
 QP

GENE INFORMATION

Gene Name [PRKCH protein kinase C, eta \[Homo sapiens \]](#)

Official Symbol [PRKCH](#)

Synonyms PRKCH; protein kinase C, eta; PRKCL; protein kinase C eta type; PKC L; PKCL; PKC-L; nPKC-eta; MGC5363; MGC26269;

Gene ID [5583](#)

mRNA Refseq [NM_006255](#)

Protein Refseq [NP_006246](#)

 Tel: 1-631-559-9269 1-516-512-3133

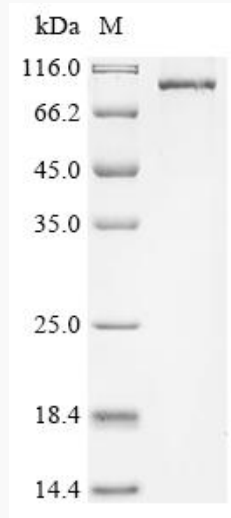
 Email: info@creative-biomart.com  Fax: 1-631-938-8127

 45-1 Ramsey Road, Shirley, NY 11967, USA

MIM 605437

UniProt ID P24723

SDS-PAGE



 Tel: 1-631-559-9269 1-516-512-3133

 Email: info@creative-biomart.com  Fax: 1-631-938-8127

 45-1 Ramsey Road, Shirley, NY 11967, USA