

Recombinant Human PRKCI Protein, Myc/DDK-tagged, C13 and N15-labeled

Cat. No. PRKCI-3713H **Lot. No.** (See product label)

SPECIFICATION

Product Overview	PRKCI MS Standard C13 and N15-labeled recombinant protein (NP_002731) with a C-terminal MYC/DDK tag, was expressed in HEK293 cells.
Species	Human
Source	HEK293
Description	<p>This gene encodes a member of the protein kinase C (PKC) family of serine/threonine protein kinases. The PKC family comprises at least eight members, which are differentially expressed and are involved in a wide variety of cellular processes. This protein kinase is calcium-independent and phospholipid-dependent. It is not activated by phorbol esters or diacylglycerol. This kinase can be recruited to vesicle tubular clusters (VTCs) by direct interaction with the small GTPase RAB2, where this kinase phosphorylates glyceraldehyde-3-phosphate dehydrogenase (GAPD/GAPDH) and plays a role in microtubule dynamics in the early secretory pathway. This kinase is found to be necessary for BCL-ABL-mediated resistance to drug-induced apoptosis and therefore protects leukemia cells against drug-induced apoptosis. There is a single exon pseudogene mapped on chromosome X.</p>
Molecular Mass	67.3 kDa
AA Sequence	MSHTVAGGGSGDHSQVRVKAYYRGDIMITHFEPSISFEGLCNEVRDMCSFDNEQL FTMKWIDEEGDPCTVSSQLELEEAFLYELNKDSELLIHVFPCVPERPGMPGPGEDK

 Tel: 1-631-559-9269 1-516-512-3133

 Email: info@creative-biomart.com  Fax: 1-631-938-8127

 45-1 Ramsey Road, Shirley, NY 11967, USA



SIYRRGARRWRKLYCANGHTFQAKRFNRRRAHCAICTDRIWGLGRQGYKCINCKLLV
 HKKCHKLVITIECGRHSLPQEPVMPMDQSSMHSDDHAQTVIPYNPSSSHESLDQVGEEK
 EAMNTRESGKASSSLGLQDFDLLRVIGRGSYAKVLLVRLKKTDRİYAMKVVKELVN
 DDEDIDWVQTEKHVFEQASNHPFLVGLHSCFQTESRLFFVIEYVNGGDLMFHMQRQ
 RKLPEEHARFYSAEISLALNYLHERGIIYRDLKLDNVLLDSEGHIKLTDYGMCKEGLRP
 GDTTSTFCGTPNYIAPEILRGEDYGFSDVWALGVLMFEMMAGRSPFDIVGSSDNP
 DQNTEDYLFQVILEKQIRIPRSM SVKAASVLKSFLNKDPKERLGCLPQTGFADIQGH
 PFRNVDWDMMEQKQVPPFKPNISGEFGLDNFDSQFTNERVQLTPDDDDIVRKIDQ
 SEFEGFEYINPLLSAEECVTRTRPLEQKLISEEDLAANDILDYKDDDDKV

Purity > 80% as determined by SDS-PAGE and Coomassie blue staining

Stability Stable for 3 months from receipt of products under proper storage and handling conditions.

Storage Store at -80 centigrade. Avoid repeated freeze-thaw cycles.

Concentration 50 µg/mL as determined by BCA

Storage Buffer 100 mM glycine, 25 mM Tris-HCl, pH 7.3.

GENE INFORMATION

Gene Name PRKCI protein kinase C iota [Homo sapiens (human)]

Official Symbol PRKCI

Synonyms PRKCI; protein kinase C, iota; DXS1179E; protein kinase C iota type; PKCI; PRKC-lambda/iota; aPKC-lambda/iota; atypical protein kinase C-lambda/iota; nPKC-iota; MGC26534;

Tel: 1-631-559-9269 1-516-512-3133

Email: info@creative-biomart.com Fax: 1-631-938-8127

45-1 Ramsey Road, Shirley, NY 11967, USA

Gene ID 5584

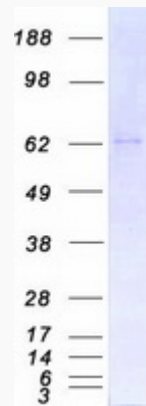
mRNA Refseq NM_002740

Protein Refseq NP_002731

MIM 600539

UniProt ID P41743

SDS-PAGE



 Tel: 1-631-559-9269 1-516-512-3133

 Email: info@creative-biomart.com  Fax: 1-631-938-8127

 45-1 Ramsey Road, Shirley, NY 11967, USA