

## Active Recombinant Full Length Human Protein Kinase C, Iota, GST-tagged

Cat. No. PRKCI-405H Lot. No. (See product label)

### SPECIFICATION

#### Product Overview

Recombinant human full-length PKC $\iota$  was expressed by baculovirus in *Sf9* cells using an N-terminal GST tag. MW=98 kDa.

#### Species

Human

#### Source

Sf9 Cells

#### Protein Length

1-596 a.a.

#### Description

PKC $\iota$  is a member of the protein kinase C family of serine-threonine kinases. The amino acid sequence of PKC $\iota$  showed greatest homology to PKC $\zeta$ , with 72% identity overall rising to 84% in the catalytic domain. Protein kinase C iota (PKC $\iota$ ) has been implicated in Ras signaling and is a critical downstream effector of oncogenic Ras in the colonic epithelium. Transgenic mice expressing constitutively active PKC $\iota$  in the colon are highly susceptible to carcinogen-induced colon carcinogenesis.

#### Sequence

Full-length.

#### Applications

Kinase Assay, Western Blot.

#### Storage And Stability

Store product at  $-70^{\circ}\text{C}$ . For optimal storage, aliquot target into smaller quantities after centrifugation and store at recommended temperature. For most favorable performance, avoid repeated handling and multiple freeze/thaw cycles.

 Tel: 1-631-559-9269 1-516-512-3133

 Email: [info@creative-biomart.com](mailto:info@creative-biomart.com)  Fax: 1-631-938-8127

 45-1 Ramsey Road, Shirley, NY 11967, USA

## GENE INFORMATION

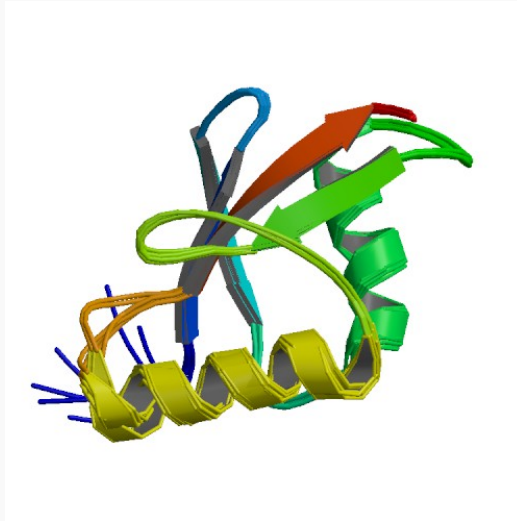
<b>Gene Name</b>	PRKCI protein kinase C, iota [ Homo sapiens ]
<b>Synonyms</b>	PRKCI; protein kinase C, iota; PKCI; DXS1179E; MGC26534; nPKC-iota; EC 2.7.11.13; Protein kinase C iota type; Atypical protein kinase C-lambda/iota; aPKC-lambda/iota; PRKC-lambda/iota
<b>Gene ID</b>	5584
<b>mRNA Refseq</b>	NM_002740
<b>Protein Refseq</b>	NP_002731
<b>UniProt ID</b>	P41743
<b>Chromosome Location</b>	3q26.3
<b>MIM</b>	600539
<b>Pathway</b>	Tight junction; Signalling by NGF; Endocytosis; Insulin signaling pathway; Cell-cell adhesion systems
<b>Function</b>	ATP binding; protein kinase C activity; metal ion binding; nucleotide binding; transferase activity; zinc ion binding; phospholipid binding; protein binding

 Tel: 1-631-559-9269 1-516-512-3133

 Email: [info@creative-biomart.com](mailto:info@creative-biomart.com)  Fax: 1-631-938-8127

 45-1 Ramsey Road, Shirley, NY 11967, USA

PDB rendering based  
on 1vd2.



 Tel: 1-631-559-9269 1-516-512-3133

 Email: [info@creative-biomart.com](mailto:info@creative-biomart.com)  Fax: 1-631-938-8127

 45-1 Ramsey Road, Shirley, NY 11967, USA