

## Recombinant Human PRKCI Protein, GST-tagged

Cat. No. PRKCI-757H Lot. No. (See product label)

### SPECIFICATION

<b>Product Overview</b>	Recombinant Human PRKCI Protein(NP_002731.4) (Met 10-Val 596) was expressed in Insect Cells, fused with the GST tag at the C-terminus.
<b>Species</b>	Human
<b>Source</b>	Insect Cells
<b>ProteinLength</b>	10-596 aa
<b>Form</b>	Lyophilized from sterile 50mM Tris, 100mM NaCl, 0.5mM GSH, 0.5mM PMSF, 10% glycerol, pH 7.4.
<b>Molecular Mass</b>	The recombinant human PKC $\lambda$ /GST chimera consists of 812 amino acids and has a predicted a molecular mass of 93.5 kDa. It migrates as an approximately 100 kDa band in SDS-PAGE under reducing conditions.
<b>Endotoxin</b>	< 1.0 EU per $\mu$ g protein as determined by the LAL method.
<b>Purity</b>	> 88 % as determined by SDS-PAGE
<b>Storage</b>	Store it under sterile conditions at -20°C to -80°C upon receiving. Recommend to aliquot the protein into smaller quantities for optimal storage. Avoid repeated freeze-thaw cycles.
<b>Reconstitution</b>	It is recommended that sterile water be added to the vial to prepare a stock solution of

 Tel: 1-631-559-9269 1-516-512-3133

 Email: [info@creative-biomart.com](mailto:info@creative-biomart.com)  Fax: 1-631-938-8127

 45-1 Ramsey Road, Shirley, NY 11967, USA

0.2 ug/ul. Centrifuge the vial at 4°C before opening to recover the entire contents.

## GENE INFORMATION

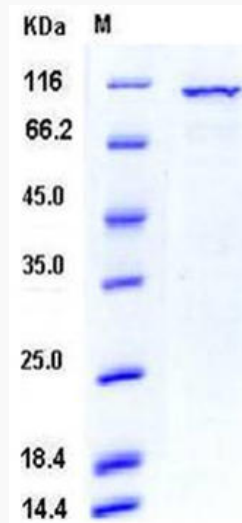
<b>Gene Name</b>	PRKCI protein kinase C, iota [ Homo sapiens ]
<b>Official Symbol</b>	PRKCI
<b>Synonyms</b>	PRKCI; protein kinase C, iota; DXS1179E; protein kinase C iota type; PKCI; PRKC-lambda/iota; aPKC-lambda/iota; atypical protein kinase C-lambda/iota; nPKC-iota; MGC26534;
<b>Gene ID</b>	5584
<b>mRNA Refseq</b>	NM_002740
<b>Protein Refseq</b>	NP_002731
<b>MIM</b>	600539
<b>UniProt ID</b>	P41743

 Tel: 1-631-559-9269 1-516-512-3133

 Email: [info@creative-biomart.com](mailto:info@creative-biomart.com)  Fax: 1-631-938-8127

 45-1 Ramsey Road, Shirley, NY 11967, USA

SDS-PAGE



 Tel: 1-631-559-9269 1-516-512-3133

 Email: [info@creative-biomart.com](mailto:info@creative-biomart.com)  Fax: 1-631-938-8127

 45-1 Ramsey Road, Shirley, NY 11967, USA