

Recombinant Full Length Human PRKCZ Protein, C-Flag-tagged

Cat. No. PRKCZ-57HFL **Lot. No.** (See product label)

SPECIFICATION

Product Overview	Recombinant Full Length Human PRKCZ Protein, fused to Flag-tag at C-terminus, was expressed in Mammalian cells.
Species	Human
Source	Mammalian Cells
Description	Protein kinase C (PKC) zeta is a member of the PKC family of serine/threonine kinases which are involved in a variety of cellular processes such as proliferation, differentiation and secretion. Unlike the classical PKC isoenzymes which are calcium-dependent, PKC zeta exhibits a kinase activity which is independent of calcium and diacylglycerol but not of phosphatidylserine. Furthermore, it is insensitive to typical PKC inhibitors and cannot be activated by phorbol ester. Unlike the classical PKC isoenzymes, it has only a single zinc finger module. These structural and biochemical properties indicate that the zeta subspecies is related to, but distinct from other isoenzymes of PKC. Alternative splicing results in multiple transcript variants encoding different isoforms.
Form	25 mM Tris HCl, pH 7.3, 100 mM glycine, 10% glycerol.
Molecular Mass	67.5 kDa
AA Sequence	MPSRTGPKMEGSGGRVRLKAHYGGDIFITSVDAATTFEELCEEVRDMCRLHQQHPL TLKWVDSEGDPTV SSQMELEEAFLRLARQCRDEGLIIHVFPSTPEQPGLPCPGEDK

 Tel: 1-631-559-9269 1-516-512-3133

 Email: info@creative-biomart.com  Fax: 1-631-938-8127

 45-1 Ramsey Road, Shirley, NY 11967, USA

SIYRRGARRWRKLYRANGHLFQAKRFNR RAYCGQCSERIWGLARQGYRCINCKLL
 VHKRCHGLVPLTCRKHMDSVMPSEQEPPVDDKNEDADLPSEETD GIAYISSSRKHDS
 IKDDSEDLKPVIDGMDGIKISQGLGLQDFDLIRVIGRGSYAKVLLVRLKKNQIYAM K
 VVKKELVHDDDEDIDWVQTEKHVFEQASSNPFLVGLHSCFQTTSRFLVIEYVNGGDL
 MFHMQRQRKLPE EHARFYAAEICIALNFLHERGIIYRDLKLDNVLLDADGHIKLDYDYG
 MCKEGLGPGDTTSTFCGTPNYIAP EILRGEYGFSDVWWALGVLMFEMMAGRSPF
 DIITDNPDMNTEDYLFQVILEKPIRIPRFLSVKASHVLK GFLNKDPKERLGCRPQTGF
 SDIKSHAFFRSIDWDLLEKKQALPPFQPQITDDYGLDNFDTQFTSEPVQLT
 PDEDAIKRIDQSEFEGFEYINPLLLSTEEVSVPTRTRPLEQKLISEEDLAANDILDY
 KDDDDKV

Purity	> 80% as determined by SDS-PAGE and Coomassie blue staining.
Stability	Stable for 12 months from the date of receipt of the product under proper storage and handling conditions. Avoid repeated freeze-thaw cycles.
Storage	Store at -80 centigrade.
Concentration	>50 ug/mL as determined by microplate BCA method.
Preparation	Recombinant protein was captured through anti-DDK affinity column followed by conventional chromatography steps.
Protein Families	Druggable Genome, Protein Kinase
Protein Pathways	Chemokine signaling pathway, Endocytosis, Insulin signaling pathway, Tight junction, Type II diabetes mellitus
Full Length	Full L.

 Tel: 1-631-559-9269 1-516-512-3133

 Email: info@creative-biomart.com  Fax: 1-631-938-8127

 45-1 Ramsey Road, Shirley, NY 11967, USA

GENE INFORMATION

Gene Name PRKCZ protein kinase C zeta [Homo sapiens (human)]

Official Symbol PRKCZ

Synonyms PKC2; PKC-ZETA

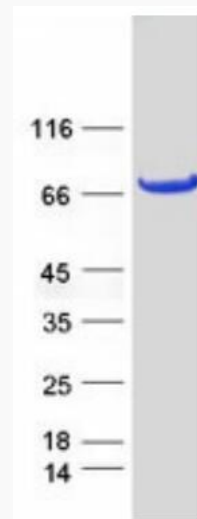
Gene ID 5590

mRNA Refseq NM_002744.6

Protein Refseq NP_002735.3

MIM 176982

UniProt ID Q05513



Tel: 1-631-559-9269 1-516-512-3133

Email: info@creative-biomart.com Fax: 1-631-938-8127

45-1 Ramsey Road, Shirley, NY 11967, USA



Coomassie blue staining of purified PRKCZ protein

 Tel: 1-631-559-9269 1-516-512-3133

 Email: info@creative-biomart.com  Fax: 1-631-938-8127

 45-1 Ramsey Road, Shirley, NY 11967, USA