

Active Recombinant Full Length Human PRKD1 Protein, GST-tagged

Cat. No. PRKD1-1901HF Lot. No. (See product label)

SPECIFICATION

Product Overview	Full-length human PKD1 [1-912(end) amino acids of accession number NP_002733.1] was expressed as N-terminal GST-fusion protein (129 kDa) using baculovirus expression system. GST-PKD1 was purified by using glutathione sepharose chromatography.
Species	Human
Source	Sf21 Cells
ProteinLength	1-912
Form	50 mM Tris-HCl, 150 mM NaCl, 0.05% Brij35, 1 mM DTT, 10% glycerol, pH7.5
Bio-activity	The activity was measured by off-chip mobility shift assay. The enzyme was incubated with fluorescence-labeled substrate and Mg(or Mn)/ATP. The phosphorylated and unphosphorylated substrates were separated and detected by LabChip™3000.
Purity	98%
Applications	SDS-PAGE
Storage	Store at -80C. Avoid repeating freeze-thaws.

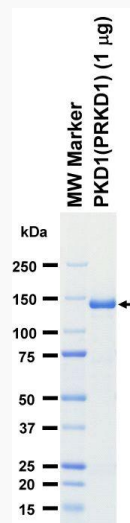
 Tel: 1-631-559-9269 1-516-512-3133

 Email: info@creative-biomart.com  Fax: 1-631-938-8127

 45-1 Ramsey Road, Shirley, NY 11967, USA

GENE INFORMATION

Gene Name	protein kinase D1
Official Symbol	PRKD1
Synonyms	PRKD1;CHDED;PKC-MU;PKCM;PKD;PRKCM;PKC-mu
Protein Refseq	NP_002733.1
UniProt ID	Q15139

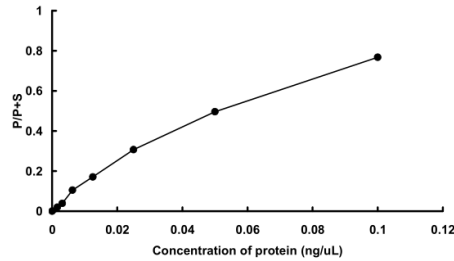
SDS-PAGE

The purity was assessed by SDS-PAGE/CBB staining.

 Tel: 1-631-559-9269 1-516-512-3133

 Email: info@creative-biomart.com  Fax: 1-631-938-8127

 45-1 Ramsey Road, Shirley, NY 11967, USA

Activity data**Activity data**

The activity was measured by off-chip mobility shift assay. The enzyme was incubated with fluorescence-labeled substrate and Mg(or Mn)/ATP. The phosphorylated and unphosphorylated substrates were separated and detected by LabChip™3000.

Tel: 1-631-559-9269 1-516-512-3133

Email: info@creative-biomart.com Fax: 1-631-938-8127

45-1 Ramsey Road, Shirley, NY 11967, USA