

# Recombinant Human PRKD1 Protein, Myc/DDK-tagged, C13 and N15-labeled

Cat. No. PRKD1-3415H Lot. No. (See product label)

## SPECIFICATION

<b>Product Overview</b>	PRKD1 MS Standard C13 and N15-labeled recombinant protein (NP_002733) with a C-terminal MYC/DDK tag, was expressed in HEK293 cells.
<b>Species</b>	Human
<b>Source</b>	HEK293
<b>Description</b>	The protein encoded by this gene is a serine/threonine protein kinase involved in many cellular processes, including Golgi body membrane integrity and transport, cell migration and differentiation, MAPK8/JNK1 and Ras pathway signaling, MAPK1/3 (ERK1/2) pathway signaling, cell survival, and regulation of cell shape and adhesion.
<b>Molecular Mass</b>	101.5 kDa
<b>AA Sequence</b>	MSAPPVLRPPSPLL PVA AAAAAAAAAAALVPGSGPGPAPFLAPVAAPVGGISFHLQIGL SREPVLLLQDSSGDYSLAHVREMACSIVDQKFPECGFYGMYDKILLFRHDPTSENL QLVKAASDIQEGDLIEVVLSASATFEDFQIRPHALFVHSYRAPAFCDHCGEMLWGLV RQGLKCEGCGLN YHKRCAFKIPNNCSGVRRRRLSNVSLTGVSTIRTSSAELSTSAPD EPLLQKSPSEFIGREKRSNSQSYIGRPIHLDKILMSKVVPHTFVIHSYTRPTVCQYC KKLLKGLFRQGLQCKDCRFNCHKRCAPKVPNNCLGEVTINGDLLSPGAESDVMEE GSDDNDSERN SGLMDDMEEAMVQDAEMAMAECQNDSGEMQDPDPDHEDANRTI SPSTSNNIPLMRV VQSVKHTKRKSSTVMKEGWMVHYTSKDTLRKRHYWRLDSKCIT LFQNDTGSRY YKEIPLSEILSLEPVKTSALIPNGANPHCFEITTANV VVVYVGENVVNPS

Tel: 1-631-559-9269 1-516-512-3133

Email: [info@creative-biomart.com](mailto:info@creative-biomart.com) Fax: 1-631-938-8127

45-1 Ramsey Road, Shirley, NY 11967, USA

SPSPNNSVLTSGVGADVARMWEIAIQHALMPVIPKGSSVGTGTNLHRDISVSISVSN  
 CQIQENVDISTVYQIFPDEVLGSGQFGIVYGGKHRKTGRDVAIKIIDKLRFPKQESQL  
 RNEVAILQNLHHPGVVNLECMFETPERVFVMEKHLHGDMLEMILSSEKGRLEPHITK  
 FLITQILVALRHLHFKNIVHCDLKPENVLLASADPPFPQVKLCDFGFARIIIGEKSFRRSVV  
 GTPAYLAPEVLRNKGYNRSLDMWSVGVIIYVSLSGTFPFNEDEDIHDQIQNAAFMYP  
 PNPWKEISHEIDLINLLQVKMRKRYSDKTLSPWLQDYQTWLDLRELECKIGER  
 YITHESDDLWEKYAGEQGLQYPHTLINPSASHSDTPETEETEMKALGERVSILTRT  
 RPLEQKLISEEDLAANDILDYKDDDDKV

<b>Purity</b>	> 80% as determined by SDS-PAGE and Coomassie blue staining
<b>Stability</b>	Stable for 3 months from receipt of products under proper storage and handling conditions.
<b>Storage</b>	Store at -80 centigrade. Avoid repeated freeze-thaw cycles.
<b>Concentration</b>	50 µg/mL as determined by BCA
<b>Storage Buffer</b>	100 mM glycine, 25 mM Tris-HCl, pH 7.3.

## GENE INFORMATION

<b>Gene Name</b>	PRKD1 protein kinase D1 [ Homo sapiens (human) ]
<b>Official Symbol</b>	PRKD1
<b>Synonyms</b>	PRKD1; protein kinase D1; PRKCM, protein kinase C, mu; serine/threonine-protein kinase D1; PKC mu; PKCM; PKD; nPKC-D1; nPKC-mu; protein kinase D; protein kinase C, mu; protein kinase C mu type; PRKCM; PKC-MU;
<b>Gene ID</b>	5587

 Tel: 1-631-559-9269 1-516-512-3133

 Email: [info@creative-biomart.com](mailto:info@creative-biomart.com)  Fax: 1-631-938-8127

 45-1 Ramsey Road, Shirley, NY 11967, USA

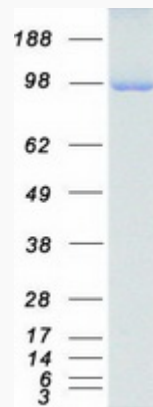
mRNA Refseq [NM\\_002742](#)

Protein Refseq [NP\\_002733](#)

MIM [605435](#)

UniProt ID [Q15139](#)

SDS-PAGE



 Tel: 1-631-559-9269 1-516-512-3133

 Email: [info@creative-biomart.com](mailto:info@creative-biomart.com)  Fax: 1-631-938-8127

 45-1 Ramsey Road, Shirley, NY 11967, USA