

Recombinant Human PRKD2 Protein, Myc/DDK-tagged, C13 and N15-labeled

Cat. No. PRKD2-6472H Lot. No. (See product label)

SPECIFICATION

Product Overview

PRKD2 MS Standard C13 and N15-labeled recombinant protein (NP_001073350) with a C-terminal MYC/DDK tag, was expressed in HEK293 cells.

Species

Human

Source

HEK293

Description

The protein encoded by this gene belongs to the protein kinase D (PKD) family of serine/threonine protein kinases. This kinase can be activated by phorbol esters as well as by gastrin via the cholecystokinin B receptor (CCKBR) in gastric cancer cells. It can bind to diacylglycerol (DAG) in the trans-Golgi network (TGN) and may regulate basolateral membrane protein exit from TGN. Alternative splicing results in multiple transcript variants encoding different isoforms.

Molecular Mass

96.5 kDa

AA Sequence

MATAPSYAGLPGSPGPGSPPPPGGLELQSPPLLQIPAPGSGVSFHIQIGLTREF
VLLPAASELAHVKQLACSIQKDFPECGFYGLYDKILLFKHDPTSANLLQLVRSSGDI
QEGDLVEVLSASATFEDFQIRPHALTVHSYRAPAFCDHCGEMLFGLVRQGLKCDG
CGLNYHKRCAFSIPNNCSGARKRRLSSTSLASGHSVRLGTSESLPCTAEELSRSTTE
LLPRRPPSSSSSSASSYTGRPIELDKMLLSKVVPHTFLIHSYTRPTVCQACKKLLK
GLFRQGLQCKDKFNCHKRCATRVNDCLGEALINGDVPMEEATDFSEADKSALM
DESEDSGVIPGSHSENALHASEEEEEGEGGKAQSSLGYIPLMRVVQSVRHTRKSST

 Tel: 1-631-559-9269 1-516-512-3133

 Email: info@creative-biomart.com  Fax: 1-631-938-8127

 45-1 Ramsey Road, Shirley, NY 11967, USA



TLREGWVVHYSNKDTLRKRHYWRLDCKCITLQNNNTNRYYYKEIPLSEILTVESAQN
 FSLVPPGTNPFCFEIVTANATYFVGEMPPGGTPGGPSGQGAEEAARGWETAIRQALM
 PVILQDAPSAPGHAPHHRQASLSISVSNSQIQENVDIATVYQIFPDEVLGSGQFGVVYG
 GKHRKTGRDVAVKVIDKLRFPKQESQLRNEVAILQSLRHPGIVNLECMFETPEKVF
 VVMEKHLHGDMLEMILSSEKGRLPERLTKFLITQILVALRHLHFKNIVHCDLKPENVLLA
 SADPPQVKLCDFGFARIIGEKSFRRSVVGTPAYLAPEVLLNQGYNRSLDMWSVGV
 MYVSLSGTFFNEDEDINDQIQNAAFMYPASPWSHISAGAILINLLQVKMRKRY
 VDKLSHPWLQEYQTWLDLRELEGKMGERYITHESSDARWEQFAAEHPLPGSGLP
 TDRDLGGACPPQDHDMMQGLAERISVLTRTRPLEQKLISEEDLAANDILDYKDDDDKV

| | |
|-----------------------|--|
| Purity | > 80% as determined by SDS-PAGE and Coomassie blue staining |
| Stability | Stable for 3 months from receipt of products under proper storage and handling conditions. |
| Storage | Store at -80 centigrade. Avoid repeated freeze-thaw cycles. |
| Concentration | 50 µg/mL as determined by BCA |
| Storage Buffer | 100 mM glycine, 25 mM Tris-HCl, pH 7.3. |

GENE INFORMATION

| | |
|------------------------|--|
| Gene Name | PRKD2 protein kinase D2 [Homo sapiens (human)] |
| Official Symbol | PRKD2 |
| Synonyms | PRKD2; protein kinase D2; serine/threonine-protein kinase D2; DKFZP586E0820; HSPC187; PKD2; nPKC-D2; |
| Gene ID | 25865 |

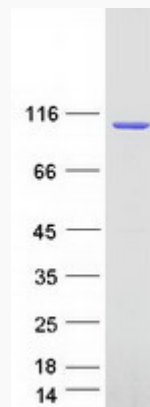
mRNA Refseq [NM_001079881](#)

Protein Refseq [NP_001073350](#)

MIM [607074](#)

UniProt ID [Q9BZL6](#)

SDS-PAGE



 Tel: 1-631-559-9269 1-516-512-3133

 Email: info@creative-biomart.com  Fax: 1-631-938-8127

 45-1 Ramsey Road, Shirley, NY 11967, USA