

Active Recombinant Full Length Human PRKG1 Protein, GST-tagged

Cat. No. PRKG1-2299HF **Lot. No.** (See product label)

SPECIFICATION

Product Overview	Full-length human PGK [1-686(end) amino acids of accession number NP_006249.1] was expressed as N-terminal GST-fusion protein (105 kDa) using baculovirus expression system. GST-PGK was purified by using glutathione sepharose chromatography.
Species	Human
Source	Sf21 Cells
ProteinLength	1-686
Form	50 mM Tris-HCl, 150 mM NaCl, 0.05% Brij35, 1 mM DTT, 10% glycerol, pH7.5
Bio-activity	The activity was measured by off-chip mobility shift assay. The enzyme was incubated with fluorescence-labeled substrate, Mg(or Mn)/ATP, and cGMP. The phosphorylated and unphosphorylated substrates were separated and detected by LabChip™3000.
Purity	63%
Applications	SDS-PAGE
Storage	Store at -80C. Avoid repeating freeze-thaws.

 Tel: 1-631-559-9269 1-516-512-3133

 Email: info@creative-biomart.com  Fax: 1-631-938-8127

 45-1 Ramsey Road, Shirley, NY 11967, USA

GENE INFORMATION

Gene Name protein kinase, cGMP-dependent, type I

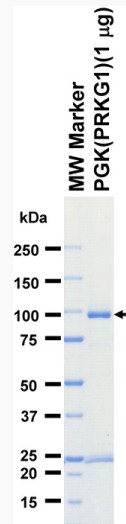
Official Symbol PRKG1

Synonyms PRKG1;AAT8;PKG;PKG1;PRKG1B;PRKGR1B;cGK;cGK1;cGK1;cGKI;cGKI-BETA;cGKI-alpha;PGK

Protein Refseq [NP_006249.1](#)

UniProt ID [Q13976](#)

SDS-PAGE

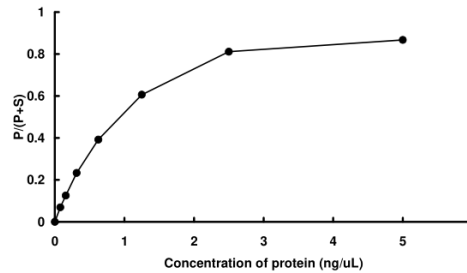


The purity was assessed by SDS-PAGE/CBB staining.

 Tel: 1-631-559-9269 1-516-512-3133

 Email: info@creative-biomart.com  Fax: 1-631-938-8127

 45-1 Ramsey Road, Shirley, NY 11967, USA

Activity data**Activity data**

The activity was measured by off-chip mobility shift assay. The enzyme was incubated with fluorescence-labeled substrate, Mg(or Mn)/ATP, and cGMP. The phosphorylated and unphosphorylated substrates were separated and detected by LabChip™3000.

 Tel: 1-631-559-9269 1-516-512-3133

 Email: info@creative-biomart.com  Fax: 1-631-938-8127

 45-1 Ramsey Road, Shirley, NY 11967, USA