

Recombinant Human PRKG1 protein, GST-tagged

Cat. No. PRKG1-5634H Lot. No. (See product label)

SPECIFICATION

Product Overview	Recombinant Human PRKG1 protein(1-178 aa), fused with N-terminal GST tag, was expressed in E.coli.
Species	Human
Source	E.coli
ProteinLength	1-178 aa
Form	The purified protein was lyophilized from sterile phosphate-buffered saline (PBS: 58 mM Na ₂ HPO ₄ , 17 mM NaH ₂ PO ₄ , 68 mM NaCl, pH 8.0). Prior to lyophilization, 5% (w/v) trehalose and 5% (w/v) mannitol were incorporated as cryoprotective excipients. The protein was eluted with a buffer containing 100 mM reduced glutathione (GSH).
AASequence	MGTLRDLQYALQEIEELRQRDALIDELELELDQKDELIQKLQNELDKYRSVIRPATQ QAQKQSASTLQGEPRTKRQAISAEPTAFDIQDLSHVTLFPYKSPQSKDLIKEAILDN DFMKNLELSQIQEIVDCMYPVEYGKDSCIIKEGDVGSLSVYVMEDGKVEVTKEGVKLC TMGPG
Purity	85%, by SDS-PAGE with Coomassie Brilliant Blue staining.
Storage	Store at 2-8°C for 1-2 weeks. Aliquot and store at -20°C to -80°C for up to 3 months, reconstitution with sterile water and addition of an equal volume of glycerol. Avoid repeat freeze-thaw cycles.

 Tel: 1-631-559-9269 1-516-512-3133

 Email: info@creative-biomart.com  Fax: 1-631-938-8127

 45-1 Ramsey Road, Shirley, NY 11967, USA

Reconstitution

Dissolve the product in 200 µl sterile water to achieve a working concentration of 0.25 g/µl. If experimental compatibility allows, mix the aqueous solution with an equal volume of glycerol (1:1 ratio) after initial reconstitution.

GENE INFORMATION
Gene Name

PRKG1 protein kinase, cGMP-dependent, type I [Homo sapiens]

Official Symbol

PRKG1

Synonyms

PRKG1; protein kinase, cGMP-dependent, type I; PRKG1B, PRKGR1B; cGMP-dependent protein kinase 1; PGK; PKG; protein kinase, cGMP-dependent, regulatory, type I, beta; 1; cGK; cGK1; cGKI; cGK 1; PRKG1B; PRKGR1B; cGKI-BETA; cGKI-alpha; FLJ36117; MGC71944; DKFZp686K042;

Gene ID

5592

mRNA Refseq

NM_001098512

Protein Refseq

NP_001091982

MIM

176894

UniProt ID

Q13976

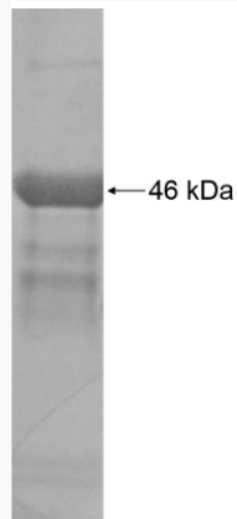
 Tel: 1-631-559-9269 1-516-512-3133

 Email: info@creative-biomart.com  Fax: 1-631-938-8127

 45-1 Ramsey Road, Shirley, NY 11967, USA



SDS-PAGE



☎ Tel: 1-631-559-9269 1-516-512-3133

☎ Email: info@creative-biomart.com ☎ Fax: 1-631-938-8127

☎ 45-1 Ramsey Road, Shirley, NY 11967, USA