

## Recombinant Human PRKG1 Protein (Gly2-Pro686), C-His tagged

Cat. No. PRKG1-5999H Lot. No. (See product label)

### SPECIFICATION

<b>Product Overview</b>	Recombinant human PRKG1 (Gly2-Pro686) fused with the C-terminal His tag was expressed in mammalian cells.
<b>Species</b>	Human
<b>Source</b>	Mammalian Cells
<b>ProteinLength</b>	Gly2-Pro686
<b>Form</b>	Lyophilized powder/frozen liquid
<b>Molecular Mass</b>	75.35 kDa
<b>Purity</b>	> 90 % as determined by SDS-PAGE
<b>Notes</b>	For research use only.
<b>Storage</b>	Use a manual defrost freezer and avoid repeated freeze thaw cycles. Store at 2 to 8 centigrade for one week. Store at -20 to -80 centigrade for twelve months from the date of receipt.
<b>Storage Buffer</b>	Supplied as solution form in PBS or lyophilized from PBS.
<b>Reconstitution</b>	Reconstitute in sterile water for a stock solution.

 Tel: 1-631-559-9269 1-516-512-3133

 Email: [info@creative-biomart.com](mailto:info@creative-biomart.com)  Fax: 1-631-938-8127

 45-1 Ramsey Road, Shirley, NY 11967, USA

**Shipping** They are shipped out with dry ice/blue ice unless customers require otherwise.

## GENE INFORMATION

**Gene Name** [PRKG1 protein kinase, cGMP-dependent, type I \[ Homo sapiens \(human\) \]](#)

**Official Symbol** [PRKG1](#)

**Synonyms** PRKG1; protein kinase, cGMP-dependent, type I; PRKG1B, PRKGR1B; cGMP-dependent protein kinase 1; PGK; PKG; protein kinase, cGMP-dependent, regulatory, type I, beta; 1; cGK; cGK1; cGKI; cGK 1; PRKG1B; PRKGR1B; cGKI-BETA; cGKI-alpha; FLJ36117; MGC71944; DKFZp686K042;

**Gene ID** [5592](#)

**mRNA Refseq** [NM\\_001098512](#)

**Protein Refseq** [NP\\_001091982](#)

**MIM** [176894](#)

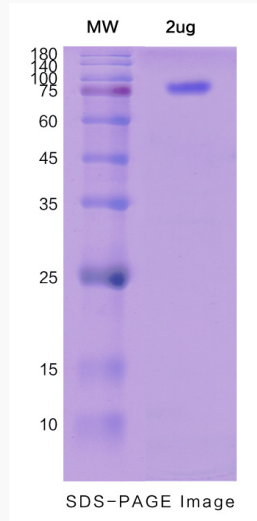
**UniProt ID** [Q13976](#)

 Tel: 1-631-559-9269 1-516-512-3133

 Email: [info@creative-biomart.com](mailto:info@creative-biomart.com)  Fax: 1-631-938-8127

 45-1 Ramsey Road, Shirley, NY 11967, USA

**SDS-PAGE**



 Tel: 1-631-559-9269 1-516-512-3133

 Email: [info@creative-biomart.com](mailto:info@creative-biomart.com)  Fax: 1-631-938-8127

 45-1 Ramsey Road, Shirley, NY 11967, USA