

# Recombinant Human PRKRIP1 Protein, Myc/DDK-tagged, C13 and N15-labeled

**Cat. No.** PRKRIP1-3663H    **Lot. No.** (See product label)

## SPECIFICATION

<b>Product Overview</b>	PRKRIP1 MS Standard C13 and N15-labeled recombinant protein (NP_078929) with a C-terminal MYC/DDK tag, was expressed in HEK293 cells.
<b>Species</b>	Human
<b>Source</b>	HEK293
<b>Description</b>	PRKRIP1 (PRKR Interacting Protein 1) is a Protein Coding gene. Diseases associated with PRKRIP1 include Fructose-1,6-Bisphosphatase Deficiency and Familial Febrile Seizures. Gene Ontology (GO) annotations related to this gene include protein kinase binding and protein kinase inhibitor activity.
<b>Molecular Mass</b>	21 kDa
<b>AA Sequence</b>	MASPAASSVRPPRPKKEPQTLVIPKNAEEQKLLERLMKNPDKAVPIPEKMSEWA PRPPPEFVRDVMGSSAGAGSGEFHVYRHLRRREYQRQDYMDAMAEKQKLYAEFQ KRLEKNKIAAEEQTAKRRKKRQKLKEKLLAKMKLEQKKQEGPGQPKEQGSSSSA EASGTEEEEEVPSFTMGRTRTRPLEQKLISEEDLAANDILDYKDDDDKV
<b>Purity</b>	> 80% as determined by SDS-PAGE and Coomassie blue staining
<b>Stability</b>	Stable for 3 months from receipt of products under proper storage and handling conditions.

 Tel: 1-631-559-9269    1-516-512-3133

 Email: [info@creative-biomart.com](mailto:info@creative-biomart.com)     Fax: 1-631-938-8127

 45-1 Ramsey Road, Shirley, NY 11967, USA

<b>Storage</b>	Store at -80 centigrade. Avoid repeated freeze-thaw cycles.
<b>Concentration</b>	50 µg/mL as determined by BCA
<b>Storage Buffer</b>	100 mM glycine, 25 mM Tris-HCl, pH 7.3.
<b>GENE INFORMATION</b>	
<b>Gene Name</b>	PRKRIP1 PRKR interacting protein 1 [ Homo sapiens (human) ]
<b>Official Symbol</b>	PRKRIP1
<b>Synonyms</b>	PRKRIP1; PRKR interacting protein 1 (IL11 inducible); PRKR-interacting protein 1; C114; FLJ13902; KRAB box domain containing 3; KRBOX3; likely ortholog of mouse C114 dsRNA binding protein; likely ortholog of mouse C114 dsRNA-binding protein; FLJ40957;
<b>Gene ID</b>	79706
<b>mRNA Refseq</b>	NM_024653
<b>Protein Refseq</b>	NP_078929
<b>MIM</b>	617458
<b>UniProt ID</b>	Q9H875

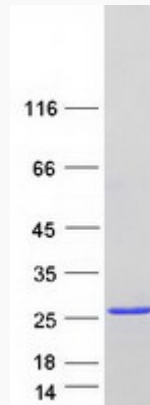
 Tel: 1-631-559-9269 1-516-512-3133

 Email: [info@creative-biomart.com](mailto:info@creative-biomart.com)  Fax: 1-631-938-8127

 45-1 Ramsey Road, Shirley, NY 11967, USA



SDS-PAGE



Tel: 1-631-559-9269 1-516-512-3133

Email: [info@creative-biomart.com](mailto:info@creative-biomart.com) Fax: 1-631-938-8127

45-1 Ramsey Road, Shirley, NY 11967, USA