

## Recombinant Human prolactin Protein, His&Flag tagged

**Cat. No.** PRL-106H    **Lot. No.** (See product label)

### SPECIFICATION

<b>Product Overview</b>	Recombinant human Prolactin/PRL protein (P01236) (Leu 29-Cys 227) with both His, Flag tag at the C-terminus was expressed in HEK293.
<b>Species</b>	Human
<b>Source</b>	HEK293
<b>ProteinLength</b>	29-227aa
<b>Description</b>	This gene encodes the anterior pituitary hormone prolactin. This secreted hormone is a growth regulator for many tissues, including cells of the immune system. It may also play a role in cell survival by suppressing apoptosis, and it is essential for lactation. Alternative splicing results in multiple transcript variants that encode the same protein. Prolactin acts primarily on the mammary gland by promoting lactation.
<b>Tag</b>	C-His&Flag
<b>Molecular Mass</b>	25.6 kDa
<b>Endotoxin</b>	Less than 1.0 EU/μg by the LAL method.
<b>Purity</b>	>95% as determined by SDS-PAGE.
<b>Storage</b>	Please avoid repeated freeze-thaw cycles. Samples are stable for up to twelve months from date of receipt at -20 to -80 centigrade. It is recommended that aliquot

 Tel: 1-631-559-9269    1-516-512-3133

 Email: [info@creative-biomart.com](mailto:info@creative-biomart.com)     Fax: 1-631-938-8127

 45-1 Ramsey Road, Shirley, NY 11967, USA

the reconstituted solution to minimize freeze-thaw cycles.

**Storage Buffer**

Lyophilized from a 0.2 µm filtered solution of PBS, pH7.4, 5% Trehalose, 5% mannitol.

**Reconstitution**

Reconstitute at 250 µg/mL in sterile water.

## GENE INFORMATION

**Gene Name**

PRL prolactin [ *Homo sapiens* (human) ]

**Official Symbol**

PRL

**Synonyms**

PRL; prolactin; decidual prolactin;

**Gene ID**

5617

**mRNA Refseq**

NM\_000948

**Protein Refseq**


NP\_000939

**MIM**

176760

**UniProt ID**

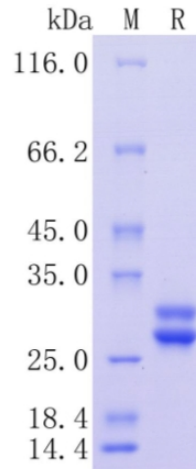
P01236

 Tel: 1-631-559-9269 1-516-512-3133

 Email: [info@creative-biomart.com](mailto:info@creative-biomart.com)  Fax: 1-631-938-8127

 45-1 Ramsey Road, Shirley, NY 11967, USA

**Protein on SDS-  
PAGE under  
reducing (R)  
condition.**



 Tel: 1-631-559-9269 1-516-512-3133

 Email: [info@creative-biomart.com](mailto:info@creative-biomart.com)  Fax: 1-631-938-8127

 45-1 Ramsey Road, Shirley, NY 11967, USA