

Recombinant Rabbit PRL Protein, His-tagged

Cat. No. PRL-1191R Lot. No. (See product label)

SPECIFICATION

Product Overview	Recombinant Rabbit PRL Protein (Leu29-Cys227) with His tag was expressed in E. coli.
Species	Rabbit
Source	E.coli
ProteinLength	Leu29-Cys227
Description	This gene encodes the anterior pituitary hormone prolactin. This secreted hormone is a growth regulator for many tissues, including cells of the immune system. It may also play a role in cell survival by suppressing apoptosis, and it is essential for lactation. Alternative splicing results in multiple transcript variants that encode the same protein.
Form	Freeze-dried powder
Molecular Mass	Predicted Molecular Mass: 24.2 kDa; Accurate Molecular Mass: 27 kDa
Purity	> 95%
Applications	Positive Control; Immunogen; SDS-PAGE; WB.
Stability	The thermal stability is described by the loss rate. The loss rate was determined by accelerated thermal degradation test, that is, incubate the protein at 37 centigrade for

 Tel: 1-631-559-9269 1-516-512-3133

 Email: info@creative-biomart.com  Fax: 1-631-938-8127

 45-1 Ramsey Road, Shirley, NY 11967, USA

48h, and no obvious degradation and precipitation were observed. The loss rate is less than 5% within the expiration date under appropriate storage condition.

Storage

Avoid repeated freeze/thaw cycles. Store at 2-8 centigrade for one month. Aliquot and store at -80 centigrade for 12 months.

Storage Buffer

PBS, pH7.4, containing 0.01% SKL, 1mM DTT, 5% Trehalose and Proclin300.

Reconstitution

Reconstitute in PBS or others.

GENE INFORMATION

Gene Name

PRL prolactin [*Oryctolagus cuniculus* (rabbit)]

Official Symbol

PRL

Synonyms

PRL; prolactin;

Gene ID

100009394

mRNA Refseq

NM_001082675

Protein Refseq

NP_001076144

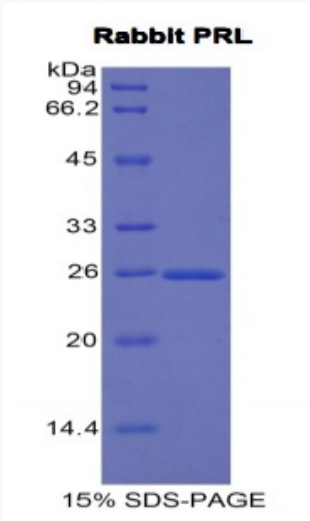
UniProt ID

Q28632

 Tel: 1-631-559-9269 1-516-512-3133

 Email: info@creative-biomart.com  Fax: 1-631-938-8127

 45-1 Ramsey Road, Shirley, NY 11967, USA



 Tel: 1-631-559-9269 1-516-512-3133

 Email: info@creative-biomart.com  Fax: 1-631-938-8127

 45-1 Ramsey Road, Shirley, NY 11967, USA