

Recombinant Sheep PRL Protein, His-tagged

Cat. No. PRL-1193S Lot. No. (See product label)

SPECIFICATION

Product Overview	Recombinant Sheep PRL Protein (Thr31-Cys229) with His tag was expressed in E. coli.
Species	Sheep
Source	E.coli
ProteinLength	Thr31-Cys229
Description	Prolactin acts primarily on the mammary gland by promoting lactation, mammogenesis, mitogenesis and osmoregulation.
Form	Freeze-dried powder
Molecular Mass	Predicted Molecular Mass: 26.4 kDa; Accurate Molecular Mass: 26 kDa
Purity	> 90%
Applications	Positive Control; Immunogen; SDS-PAGE; WB.
Stability	The thermal stability is described by the loss rate. The loss rate was determined by accelerated thermal degradation test, that is, incubate the protein at 37 centigrade for 48h, and no obvious degradation and precipitation were observed. The loss rate is less than 5% within the expiration date under appropriate storage condition.

 Tel: 1-631-559-9269 1-516-512-3133

 Email: info@creative-biomart.com  Fax: 1-631-938-8127

 45-1 Ramsey Road, Shirley, NY 11967, USA

Storage	Avoid repeated freeze/thaw cycles. Store at 2-8 centigrade for one month. Aliquot and store at -80 centigrade for 12 months.
Storage Buffer	20mM Tris, 150mM NaCl, pH8.0, containing 1mM EDTA, 1mM DTT, 0.01% SKL, 5% Trehalose and Proclin300.
Reconstitution	Reconstitute in 20mM Tris, 150mM NaCl (pH8.0) to a concentration of 0.1-1.0 mg/mL. Do not vortex.

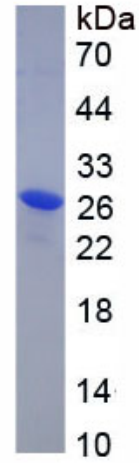
GENE INFORMATION

Gene Name	PRL prolactin [<i>Ovis aries</i> (sheep)]
Official Symbol	PRL
Synonyms	PRL; prolactin; prolactin; prolactin type 2a; prolactin type 2b; prolactin type 2c; prolactin type 3
Gene ID	443317
mRNA Refseq	NM_001009306
Protein Refseq	NP_001009306
UniProt ID	www.uniprot.org/uniprot/P01240

 Tel: 1-631-559-9269 1-516-512-3133

 Email: info@creative-biomart.com  Fax: 1-631-938-8127

 45-1 Ramsey Road, Shirley, NY 11967, USA



Tel: 1-631-559-9269 1-516-512-3133

Email: info@creative-biomart.com Fax: 1-631-938-8127

45-1 Ramsey Road, Shirley, NY 11967, USA