

Recombinant Chicken PRL Protein, His-tagged

Cat. No. PRL-1195C **Lot. No.** (See product label)

SPECIFICATION

Product Overview	Recombinant Chicken PRL Protein (Leu31-Cys229) with His tag was expressed in E. coli.
Species	Chicken
Source	E.coli
ProteinLength	Leu31-Cys229
Description	Predicted to enable hormone activity. Acts upstream of or within ion homeostasis; multicellular organismal response to stress; and negative regulation of apoptotic process. Predicted to be located in extracellular region. Predicted to be active in extracellular space. Is expressed in adenohypophyseal placode; female organism; hypophysis; male organism; and peptide hormone secreting cell. Human ortholog(s) of this gene implicated in carotid artery disease. Orthologous to human PRL (prolactin).
Form	Freeze-dried powder
Molecular Mass	Predicted Molecular Mass: 26.5 kDa; Accurate Molecular Mass: 27 kDa
Purity	> 90%
Applications	Positive Control; Immunogen; SDS-PAGE; WB.

 Tel: 1-631-559-9269 1-516-512-3133

 Email: info@creative-biomart.com  Fax: 1-631-938-8127

 45-1 Ramsey Road, Shirley, NY 11967, USA

Stability	The thermal stability is described by the loss rate. The loss rate was determined by accelerated thermal degradation test, that is, incubate the protein at 37 centigrade for 48h, and no obvious degradation and precipitation were observed. The loss rate is less than 5% within the expiration date under appropriate storage condition.
Storage	Avoid repeated freeze/thaw cycles. Store at 2-8 centigrade for one month. Aliquot and store at -80 centigrade for 12 months.
Storage Buffer	20mM Tris, 150mM NaCl, pH8.0, containing 1mM EDTA, 1mM DTT, 0.01% SKL, 5% Trehalose and Proclin300.
Reconstitution	Reconstitute in 20mM Tris, 150mM NaCl (pH8.0) to a concentration of 0.1-1.0 mg/mL. Do not vortex.

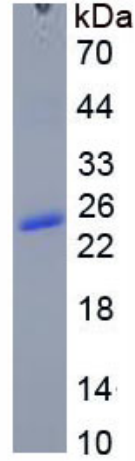
GENE INFORMATION

Gene Name	PRL prolactin [Gallus gallus (chicken)]
Official Symbol	PRL
Synonyms	PRL; prolactin; prolactin; prolactin type 2a; prolactin type 2b; prolactin type 2c; prolactin type 3
Gene ID	396453
mRNA Refseq	NM_205466
Protein Refseq	NP_990797
UniProt ID	www.uniprot.org/uniprot/P14676

 Tel: 1-631-559-9269 1-516-512-3133

 Email: info@creative-biomart.com  Fax: 1-631-938-8127

 45-1 Ramsey Road, Shirley, NY 11967, USA



 Tel: 1-631-559-9269 1-516-512-3133

 Email: info@creative-biomart.com  Fax: 1-631-938-8127

 45-1 Ramsey Road, Shirley, NY 11967, USA