

## Recombinant Human Prolactin Hormone Protein, His tagged

Cat. No. PRL-14H Lot. No. (See product label)

### SPECIFICATION

<b>Product Overview</b>	Human prolactin hormone, produced in HEK293 cells with a C-terminal His-tag and purified by affinity chromatography and dialysis.
<b>Species</b>	Human
<b>Source</b>	HEK293
<b>ProteinLength</b>	1-227 aa
<b>Description</b>	Prolactin (PRL) is a 198-amino-acid hormone secreted by the anterior pituitary gland, primarily responsible for lactation. Beyond its lactogenic role, PRL also influences reproductive health, immune responses, and metabolic regulation. Structurally related to growth hormone and placental lactogen, PRL mainly circulates as a biologically active monomer (23 kDa), while less active dimeric and polymeric forms, especially macroprolactin, may cause asymptomatic hyperprolactinemia.
<b>Form</b>	Liquid in DPBS.
<b>Molecular Mass</b>	Expected Molecular Weight: 30.4 kDa Observed Molecular Weight: 30 kDa, 32 kDa
<b>Storage</b>	Short Term Storage: -80 centigrade Long Term Storage: -80 centigrade Avoid multiple freeze-thaw cycles, Can be frozen, but avoid multiple freeze-thaw cycles
<b>Concentration</b>	2.0 mg/mL

 Tel: 1-631-559-9269 1-516-512-3133

 Email: [info@creative-biomart.com](mailto:info@creative-biomart.com)  Fax: 1-631-938-8127

 45-1 Ramsey Road, Shirley, NY 11967, USA

**Reference**

1. Hattori N. Macroprolactinemia: new insights in hyperprolactinemia. J Clin Endocrinol Metab. 2014;99(6):2087–2095. 2. Fahie-Wilson M, Smith TP. Determination of prolactin: the macroprolactin problem. Best Pract Res Clin Endocrinol Metab. 2013;27(5):725–742. 3. WHO International Collaborative Study of the Proposed 4th International Standard for Prolactin, Human. [Accessed 04/2025].

**GENE INFORMATION**

**Gene Name** PRL prolactin [ Homo sapiens ]

**Official Symbol** PRL

**Synonyms** PRL; prolactin; decidual prolactin;

**Gene ID** 5617

**mRNA Refseq** NM\_000948

**Protein Refseq** NP\_000939

**MIM** 176760

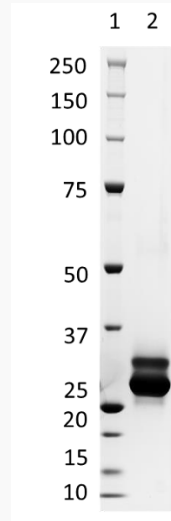
**UniProt ID** P01236

 Tel: 1-631-559-9269 1-516-512-3133

 Email: [info@creative-biomart.com](mailto:info@creative-biomart.com)  Fax: 1-631-938-8127

 45-1 Ramsey Road, Shirley, NY 11967, USA

**SDS-PAGE**



 Tel: 1-631-559-9269 1-516-512-3133

 Email: [info@creative-biomart.com](mailto:info@creative-biomart.com)  Fax: 1-631-938-8127

 45-1 Ramsey Road, Shirley, NY 11967, USA