

Recombinant Bovine PRL protein(31-229aa), His&Myc-tagged

Cat. No. PRL-2198B **Lot. No.** (See product label)

SPECIFICATION

Product Overview	Recombinant Bovine PRL protein(P01239)(31-229aa), fused with N-terminal His tag and C-terminal Myc tag, was expressed in E.coli.
Species	Bovine
Source	E.coli
ProteinLength	31-229aa
Form	If the delivery form is liquid, the default storage buffer is Tris/PBS-based buffer, 5%-50% glycerol. If the delivery form is lyophilized powder, the buffer before lyophilization is Tris/PBS-based buffer, 6% Trehalose, pH 8.0.
Molecular Mass	30.1 kDa
Purity	Greater than 90% as determined by SDS-PAGE.
Storage	Store at -20°C/-80°C upon receipt, aliquoting is necessary for mutiple use. Avoid repeated freeze-thaw cycles.
Reconstitution	We recommend that this vial be briefly centrifuged prior to opening to bring the contents to the bottom. Please reconstitute protein in deionized sterile water to a concentration of 0.1-1.0 mg/mL. We recommend to add 5-50% of glycerol (final concentration) and aliquot for long-term storage at -20°C/-80°C.

 Tel: 1-631-559-9269 1-516-512-3133

 Email: info@creative-biomart.com  Fax: 1-631-938-8127

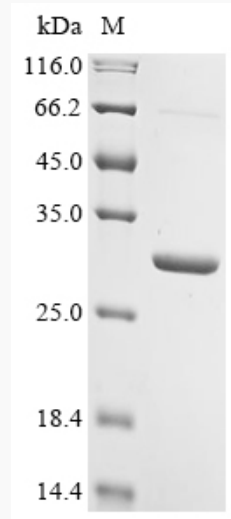
 45-1 Ramsey Road, Shirley, NY 11967, USA



AA Sequence

TPVCPNGPGNCQVSLRDLFDRAVMVSHYIHDLSSEMFNEFDKRYAQQGKGFITMALN
SHTSSLPTPEDKEQAQQTHHEVLMSLILGLLRSWNDPLYHLVTEVRGMKGAPDAIL
SRAIEIEEENKRLLEGMEMIFGQVIPGAKETEPYPVWSGLPSLQTKDEDARYSAFYNL
LHCLRRDSSKIDTYLKLLNCRIIYNNNC

SDS-PAGE



Tel: 1-631-559-9269 1-516-512-3133

Email: info@creative-biomart.com Fax: 1-631-938-8127

45-1 Ramsey Road, Shirley, NY 11967, USA